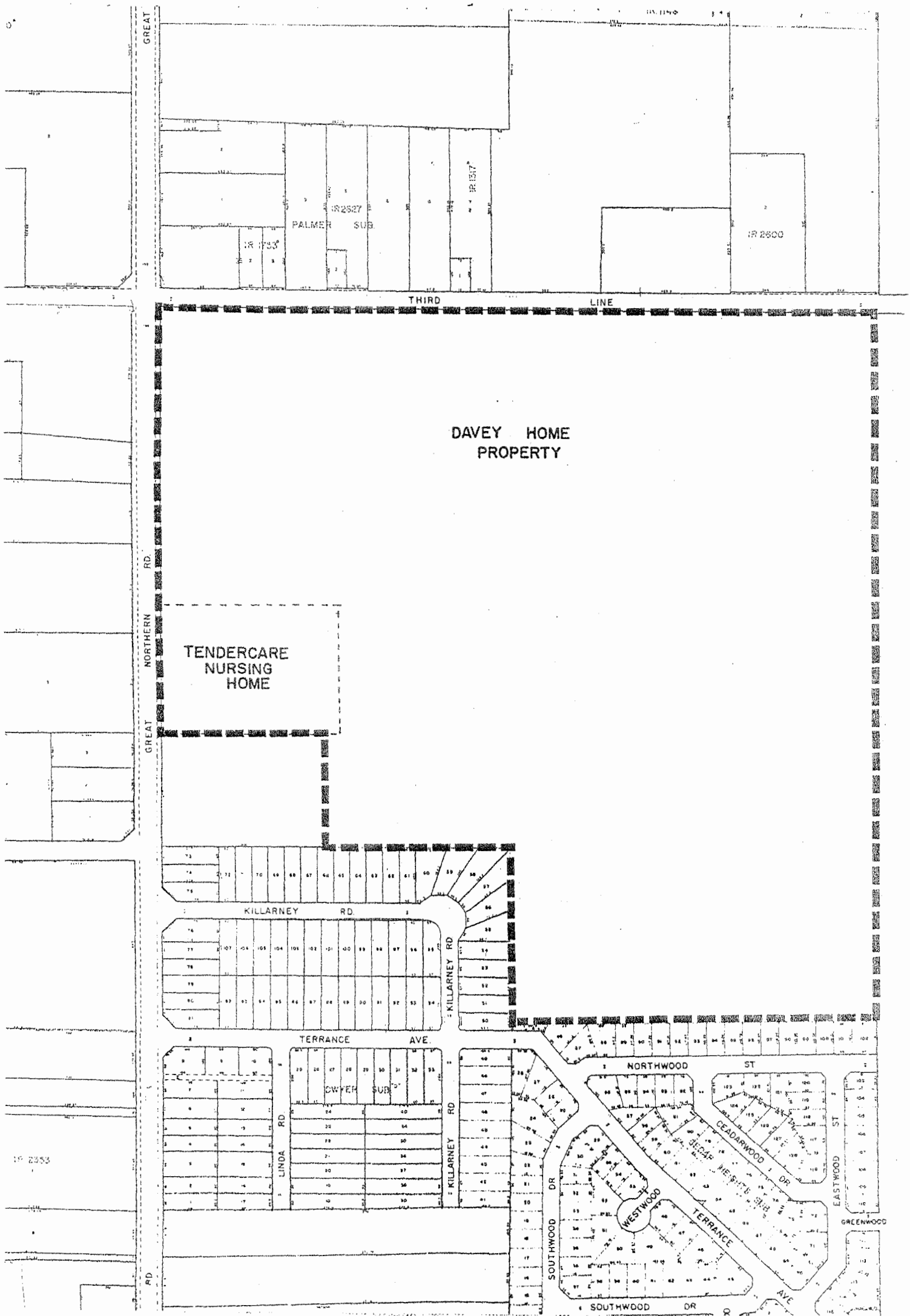


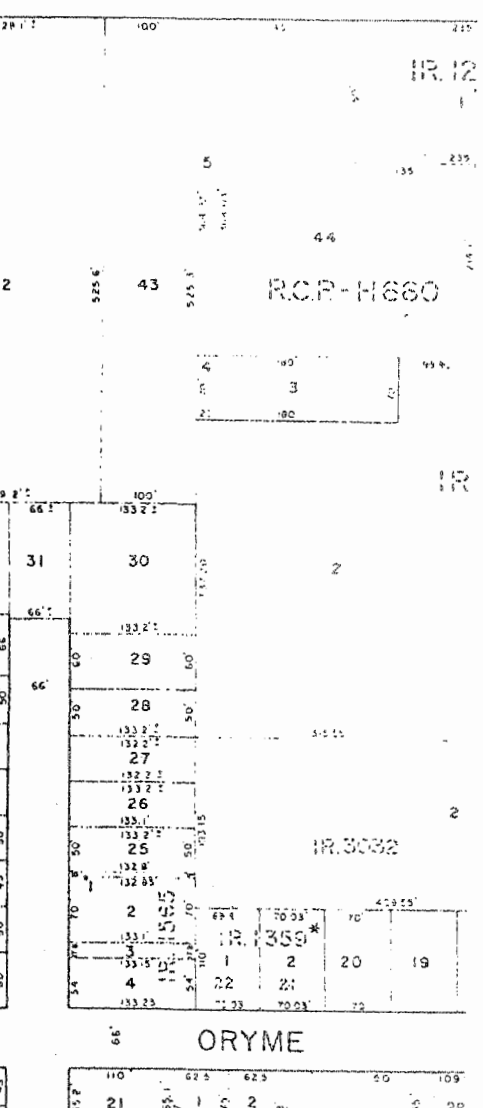
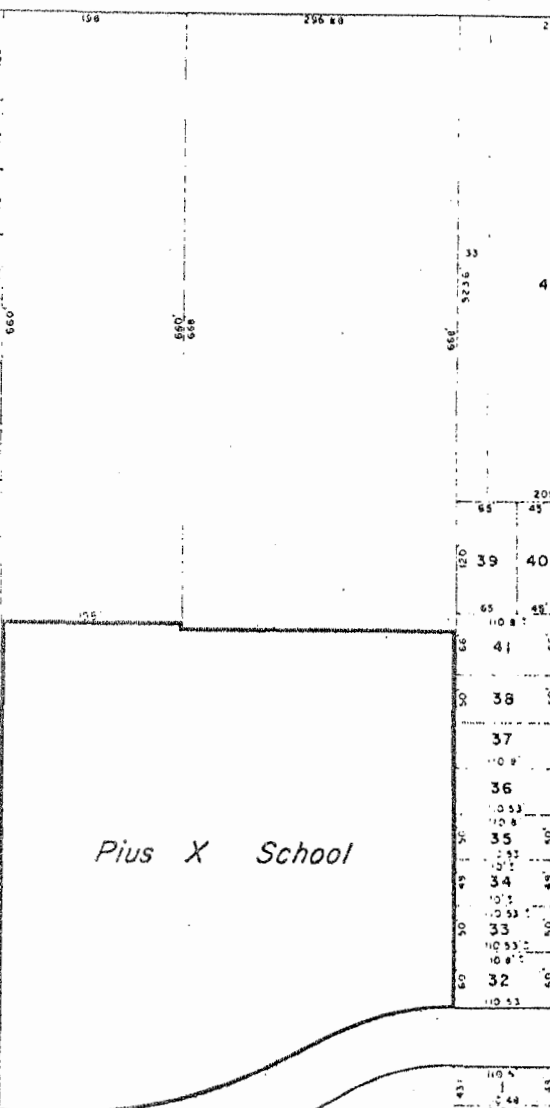
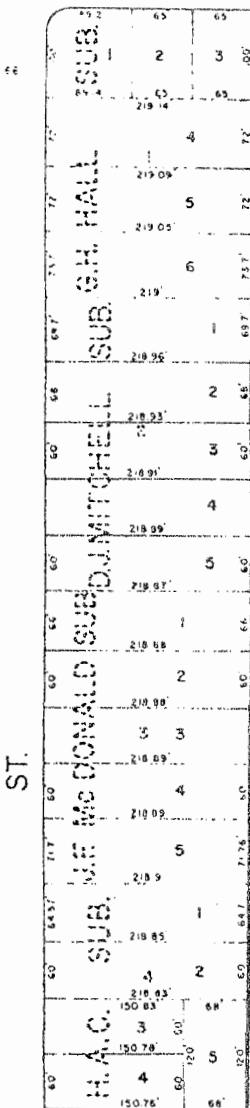
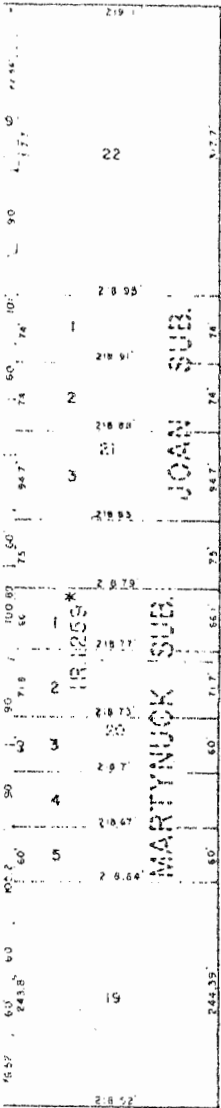
SCHEDULE 'A'
 TO
 BYLAW 80-200





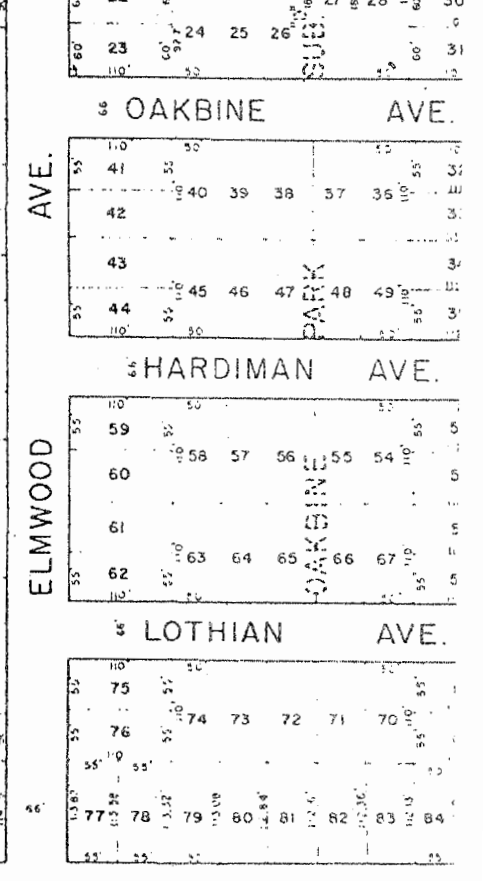
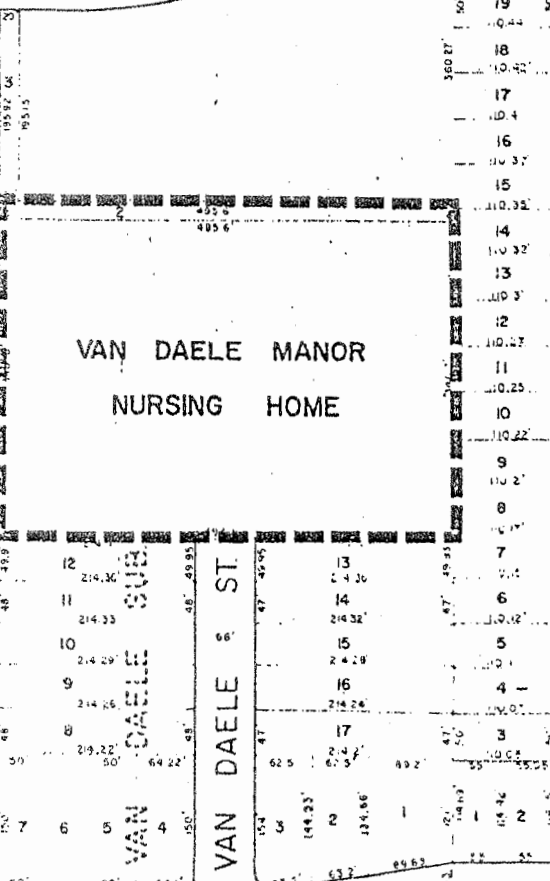
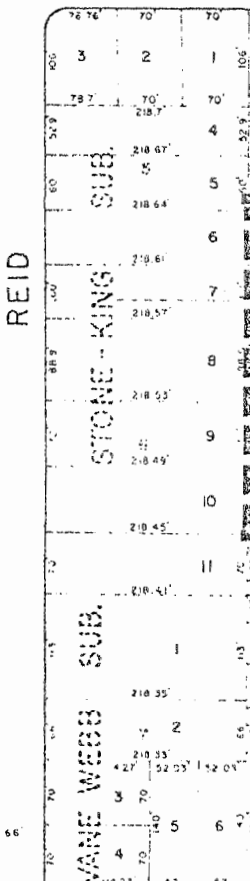
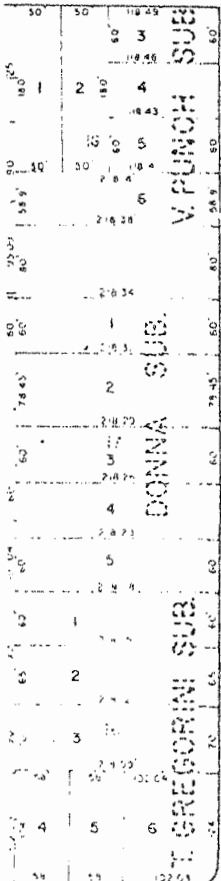
HERN

AVE.



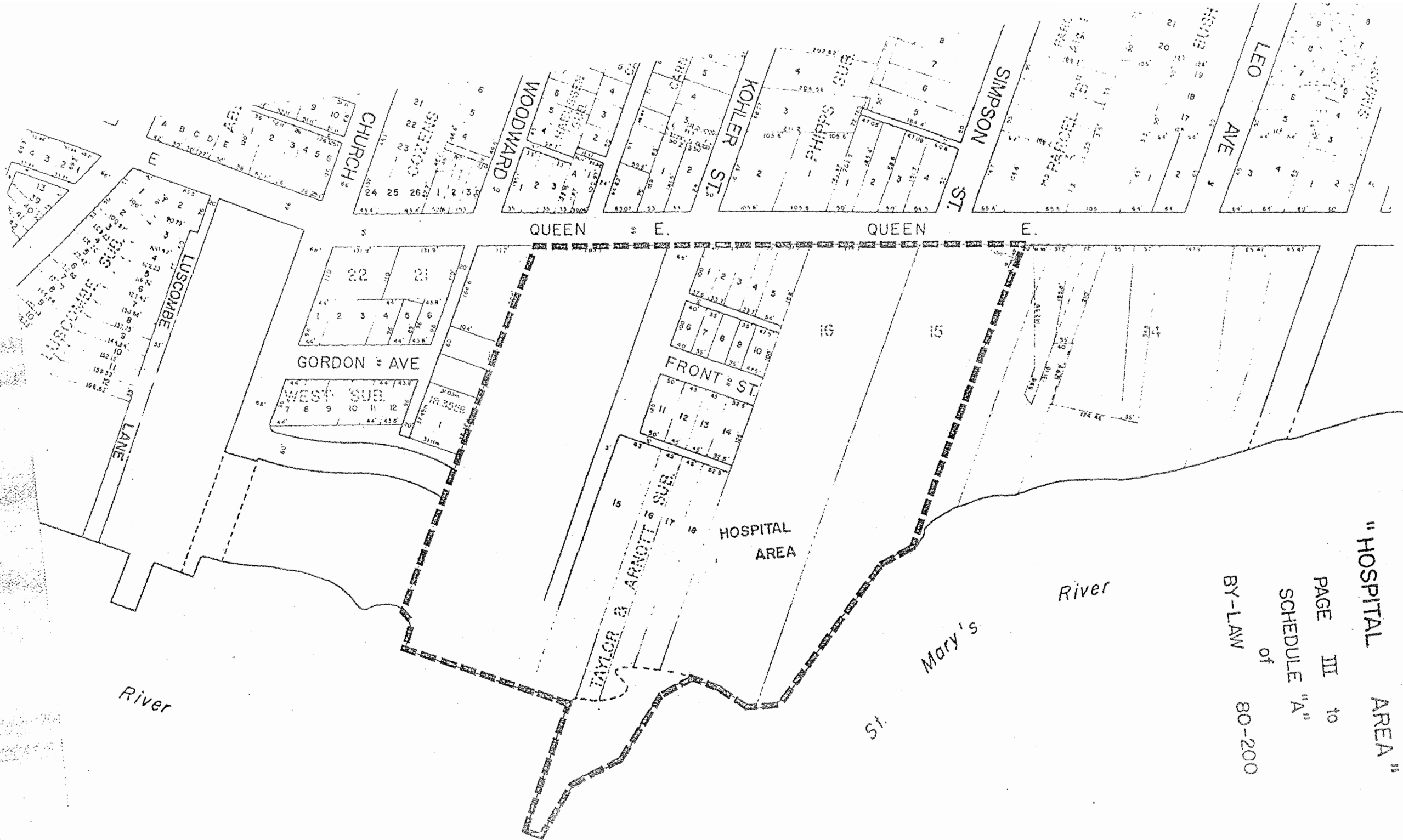
STRAND

AVE.



WAWANOSH

AVE.



"HOSPITAL AREA"

PAGE III to
 SCHEDULE "A"
 of
 BY-LAW 80-200

River

St. Mary's

St.

HOSPITAL
 AREA

TAYLOR & ARNOTT SUB.

FRONT ST.

GORDON & AVE

WEST SUB.

LANE

LUSCOMBE

QUEEN E. QUEEN E.

LEO AVE

SIMPSON ST.

KOHLER ST.

WOODWARD

CHURCH

COZZENS