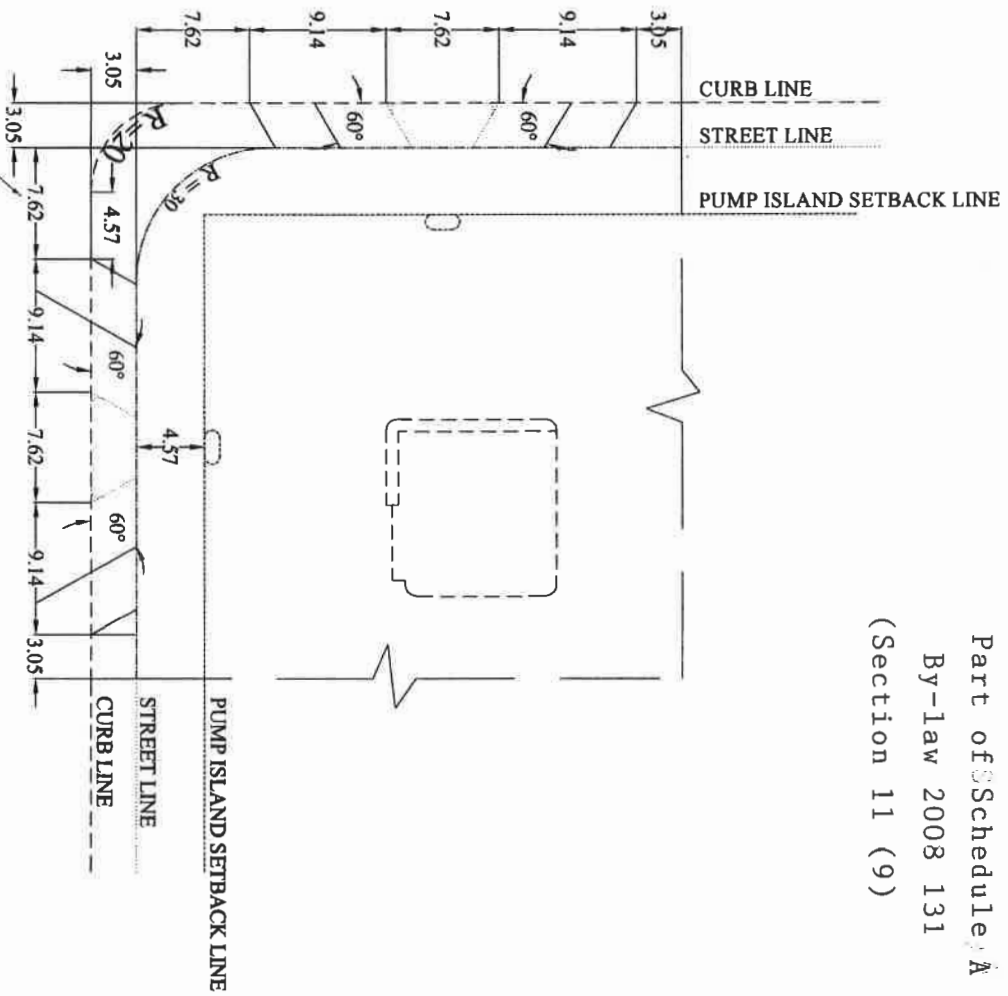
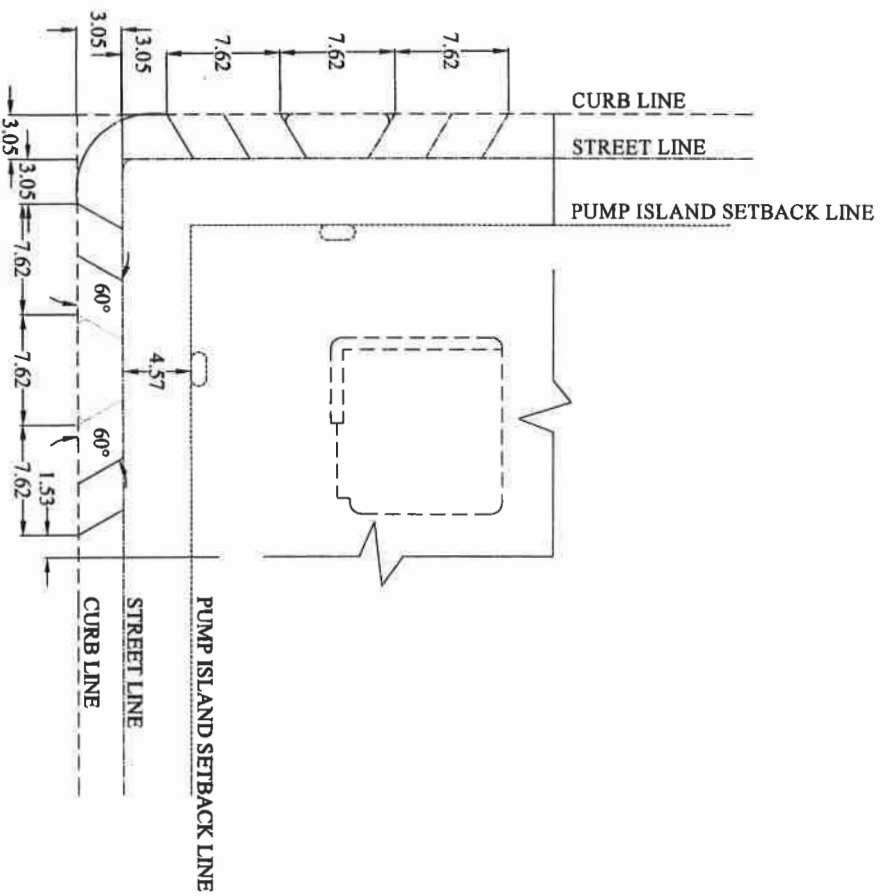


**RECOMMENDED CONDITION**

Part of Schedule A  
By-law 2008 131  
(Section 11 (9))

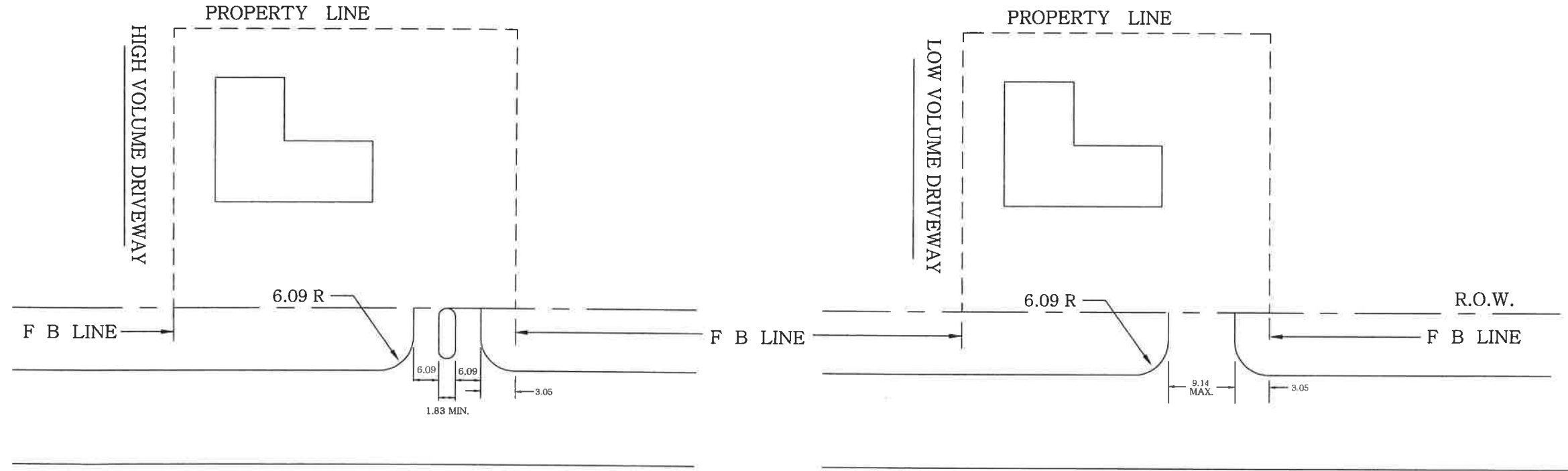


**MINIMUM CONDITION**



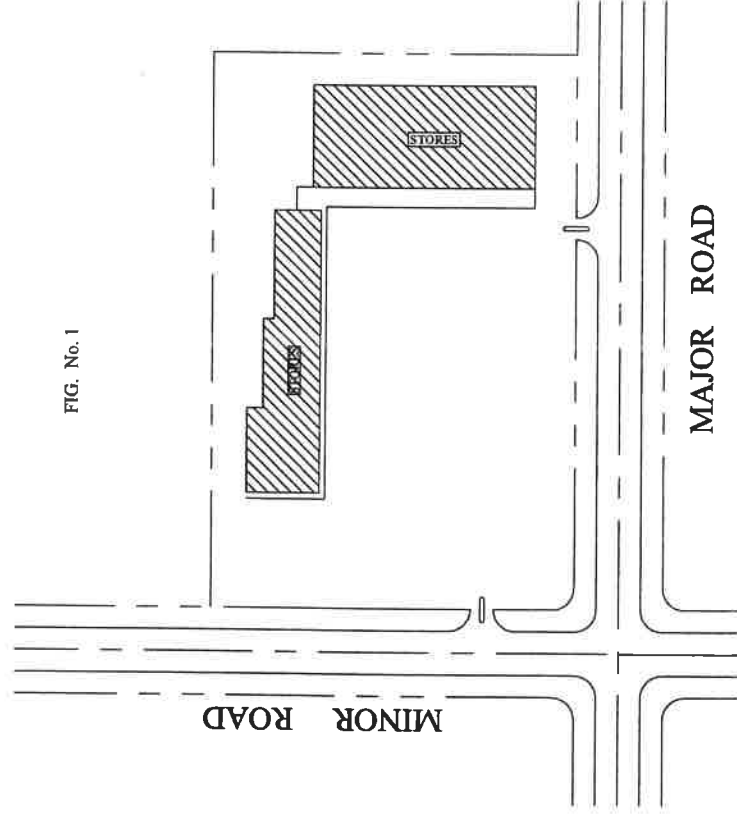
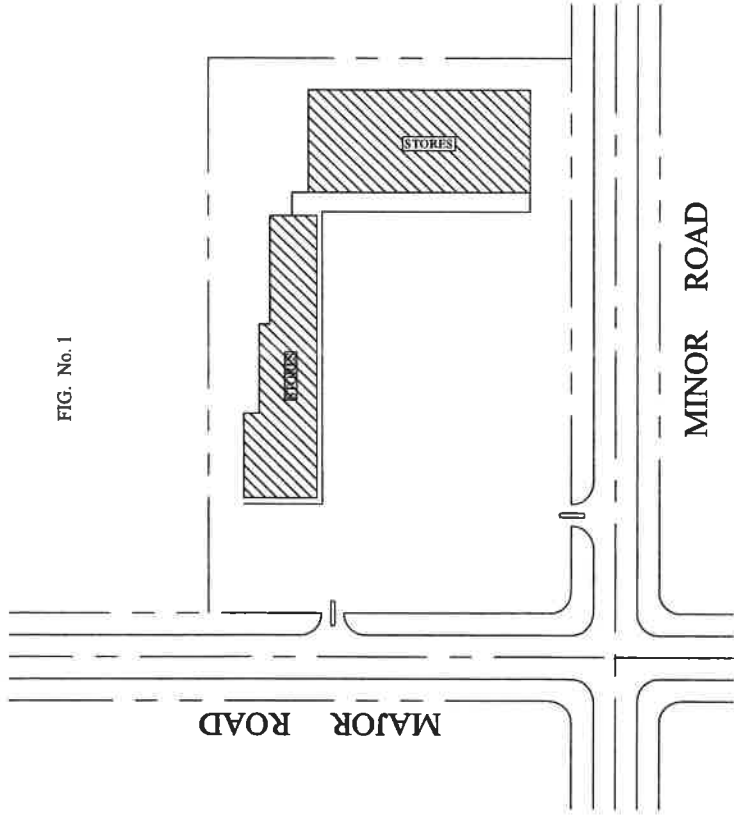
**DRIVEWAY CONTROL POLICY  
FOR SERVICE STATIONS**

Part of Schedule "A"  
By-Law 2008-131  
(Section 11 (9))

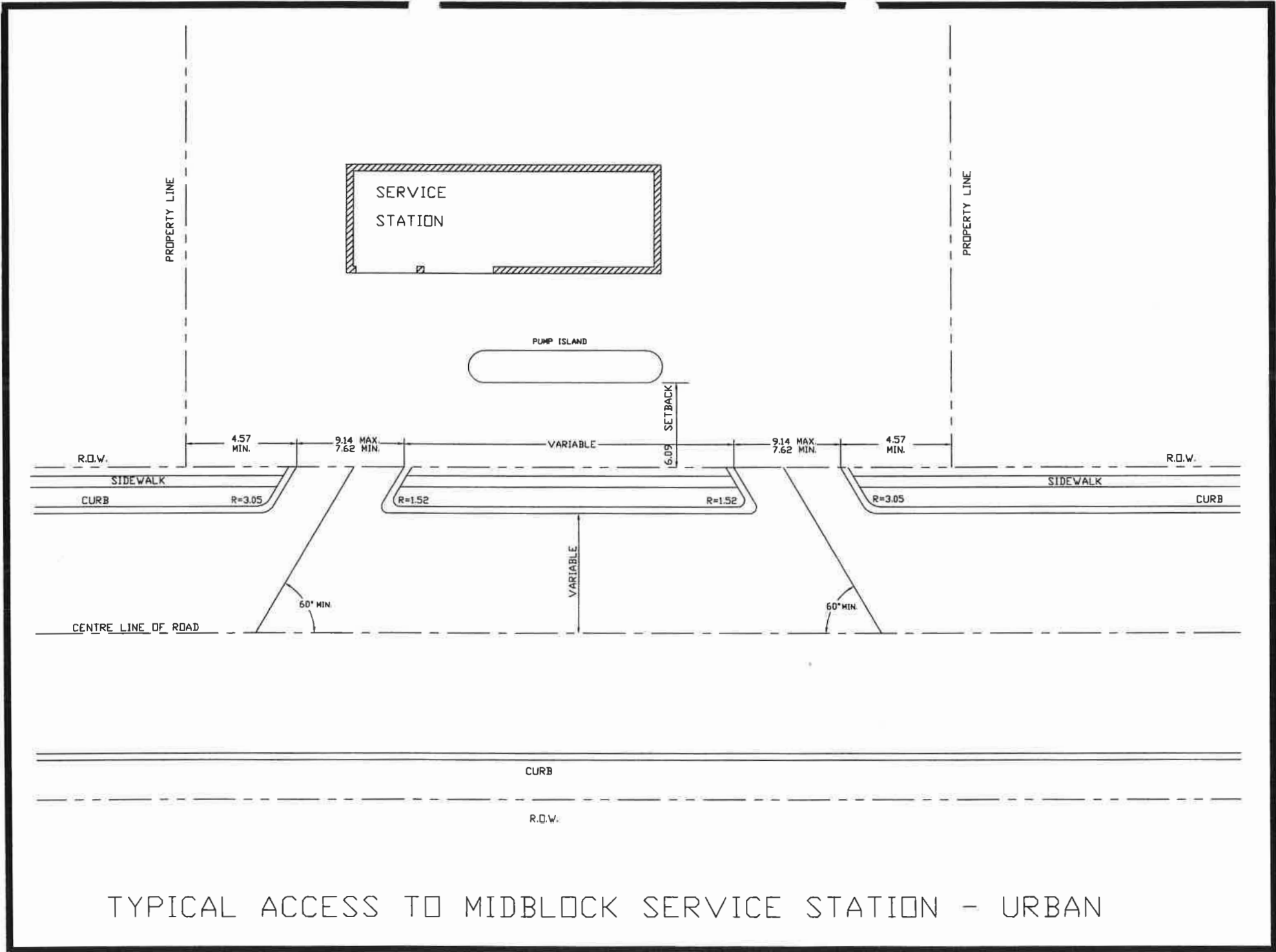


APPLICABLE TO RESIDENTIAL, COMMERCIAL OR  
INDUSTRIAL PROPERTIES

Part of Schedule "A"  
By-law 2008-131  
(Section 11 (9))



TYPICAL ACCESS FOR CORNER COMMERCIAL - URBAN



TYPICAL ACCESS TO MIDBLOCK SERVICE STATION - URBAN