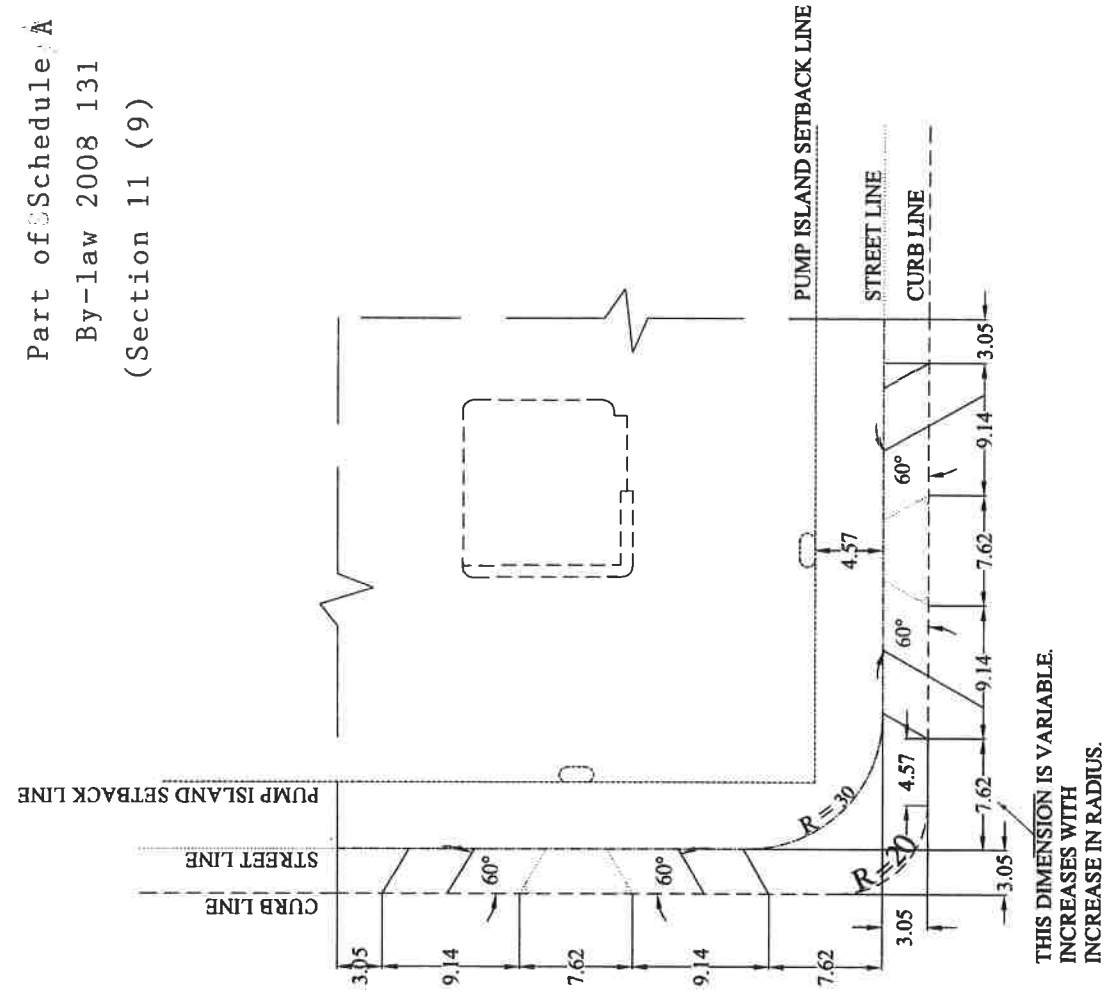


RECOMMENDED CONDITION

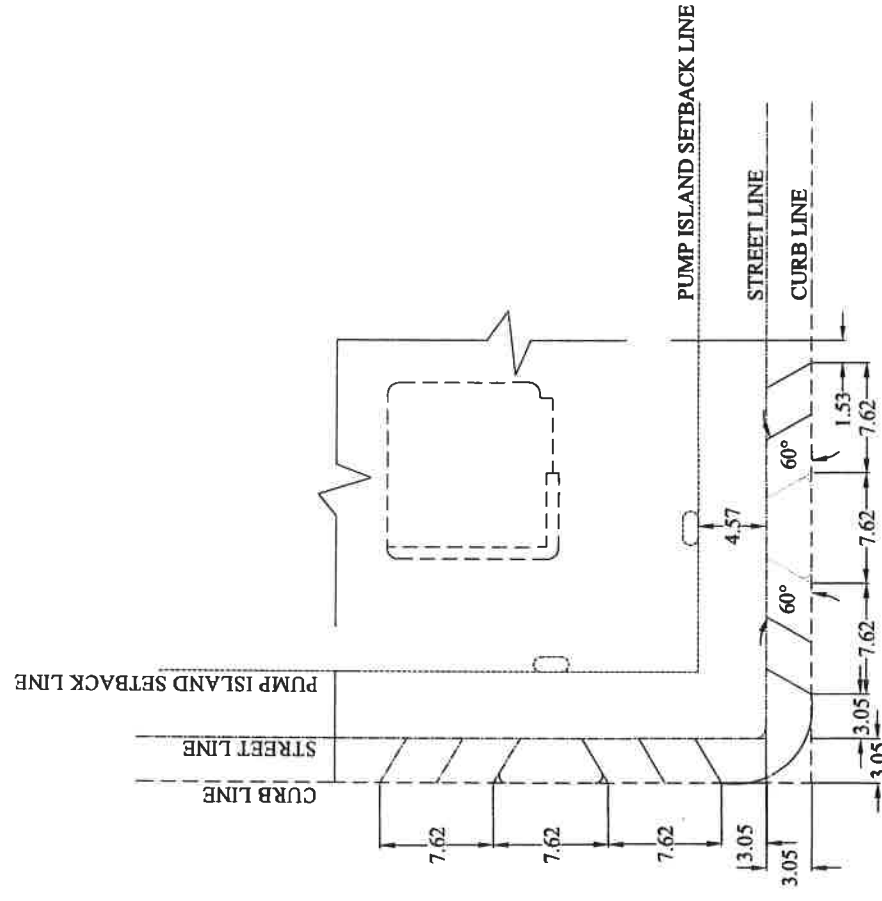
Part of Schedule A

By-law 2008 131

(Section 11 (9))



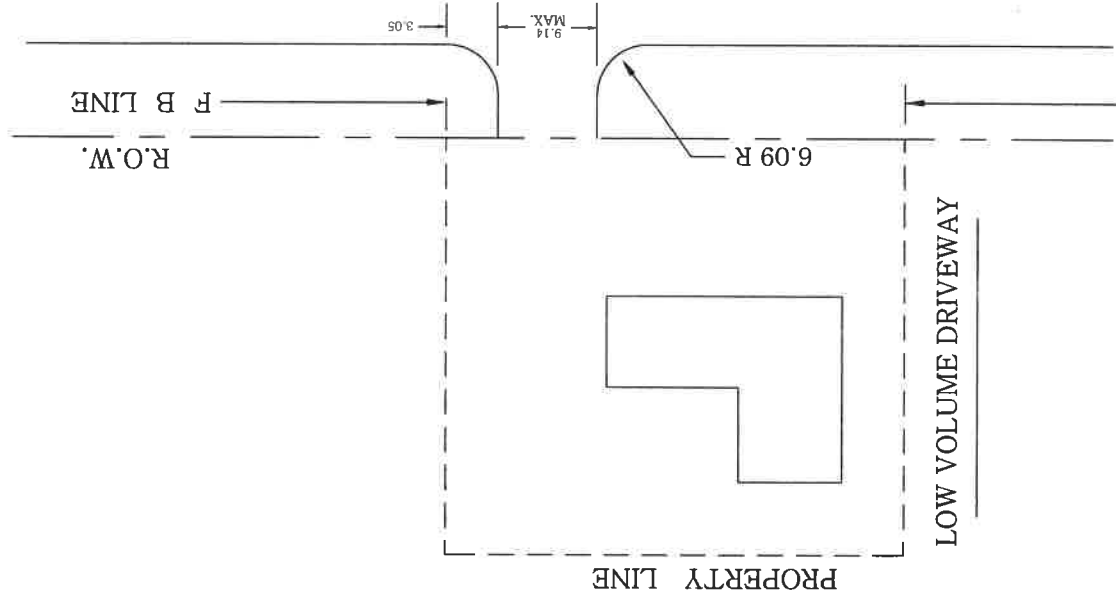
MINIMUM CONDITION



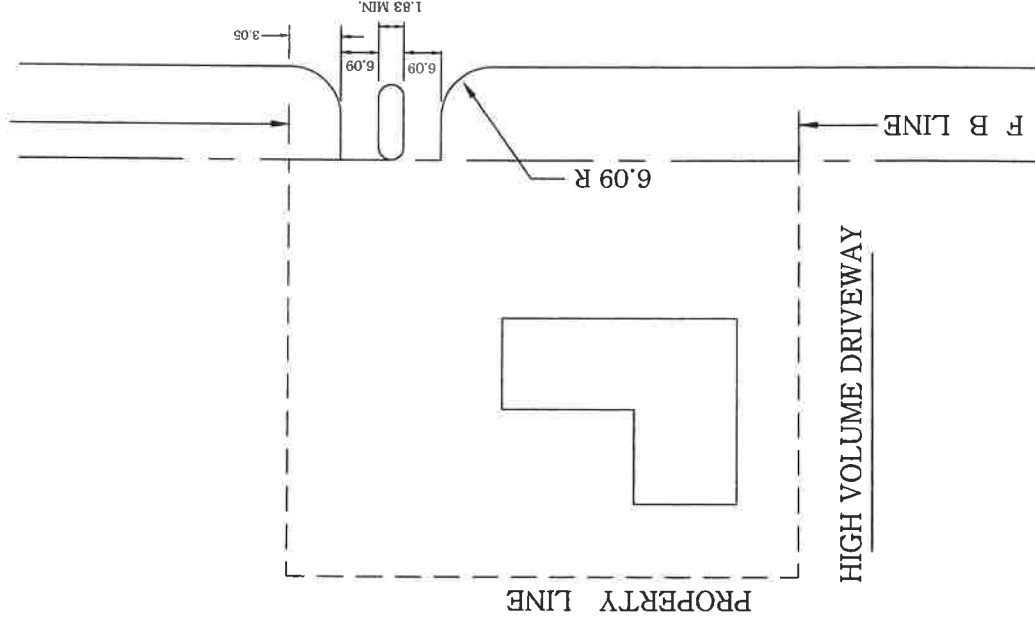
DRIVEWAY CONTROL POLICY FOR SERVICE STATIONS

Part of Schedule "A"
By-law 2008-131
(Section 11 (9))

INDUSTRIAL PROPERTIES
APPLICABLE TO RESIDENTIAL, COMMERCIAL OR

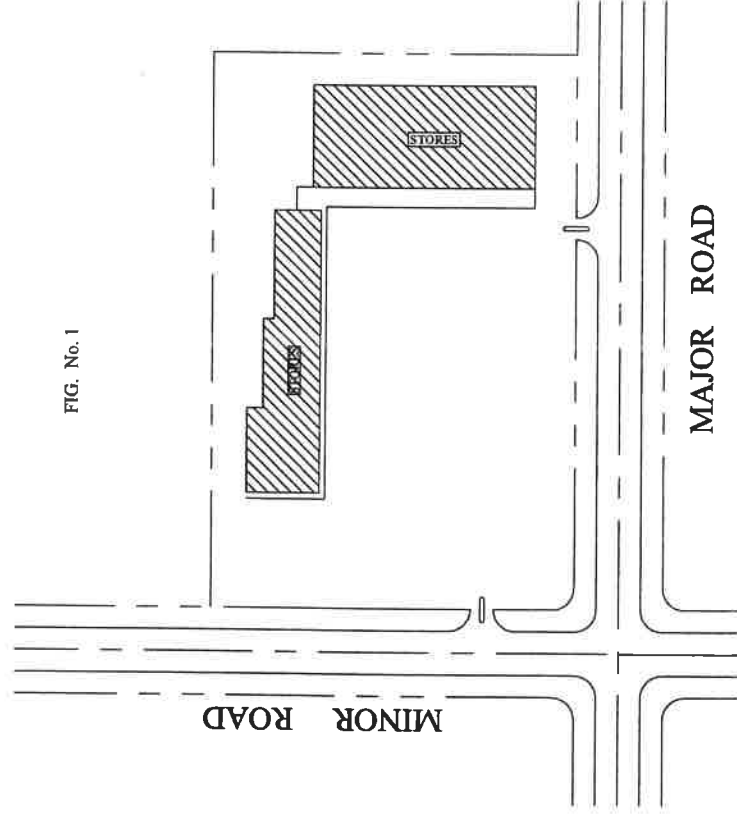
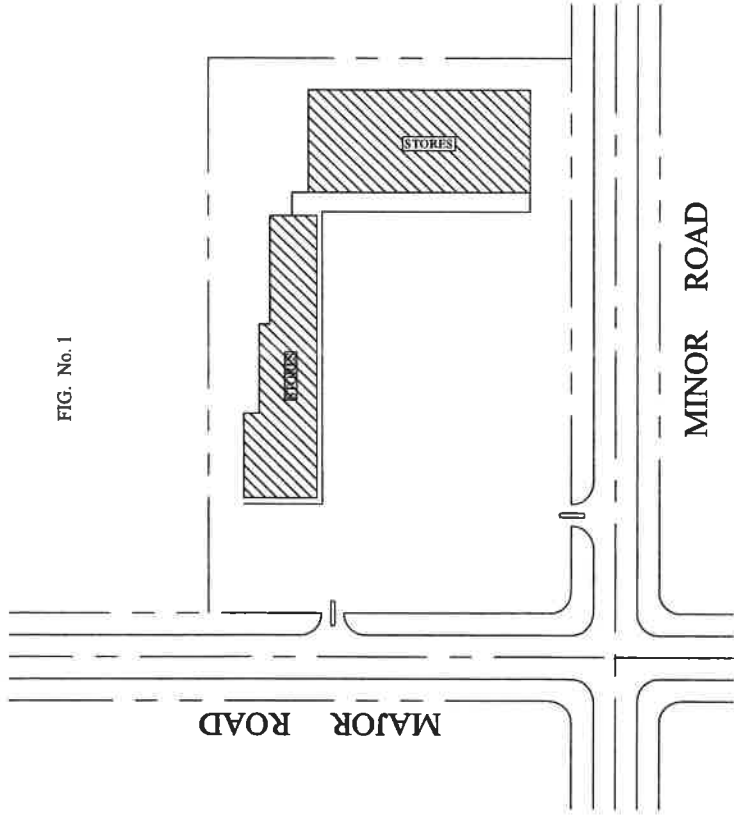


F B LINE



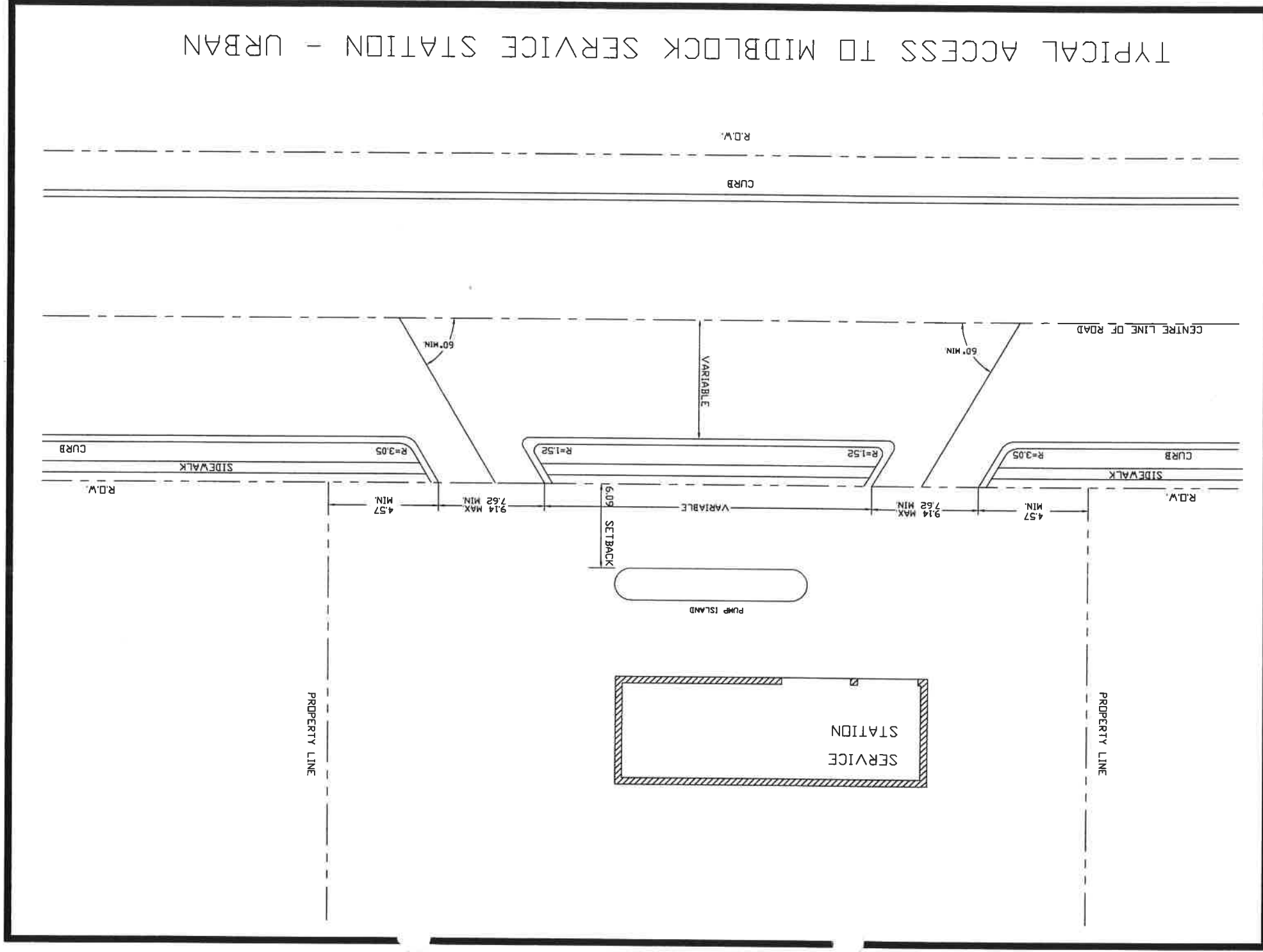
F B LINE

Part of Schedule "A"
By-law 2008-131
(Section 11 (9))



TYPICAL ACCESS FOR CORNER COMMERCIAL - URBAN

Part of Schedule "A"
By-law 2008-131
(Section 11 (9))



TYPICAL ACCESS TO MIDDLEBLOCK SERVICE STATION - URBAN