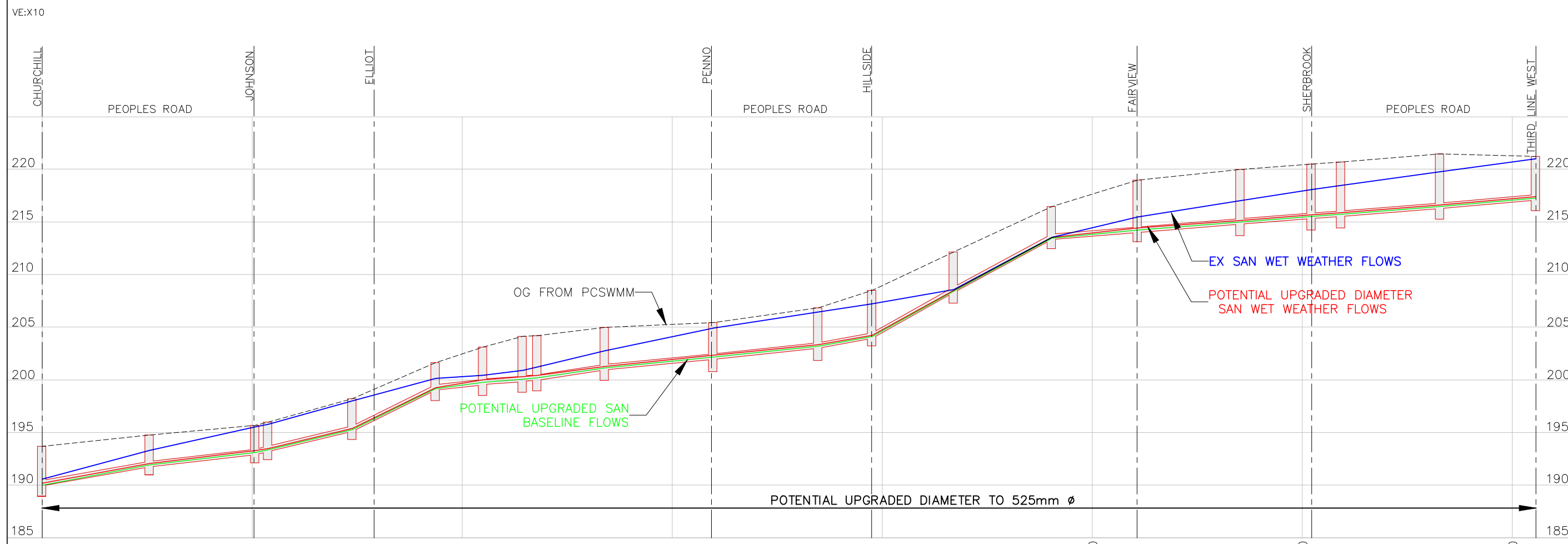




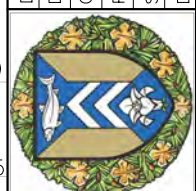
NOTE:
 1. Existing pipe diameters 350mm
 2. Wet weather flows consist of base flows x 2.5.



DRAWING No.
1

PLAN AND PROFILE
Flooding Assessment Class EA
 Upgraded Peoples Road Sanitary Sewer Alternative - Impact
 to Peoples Road Sanitary Sewer

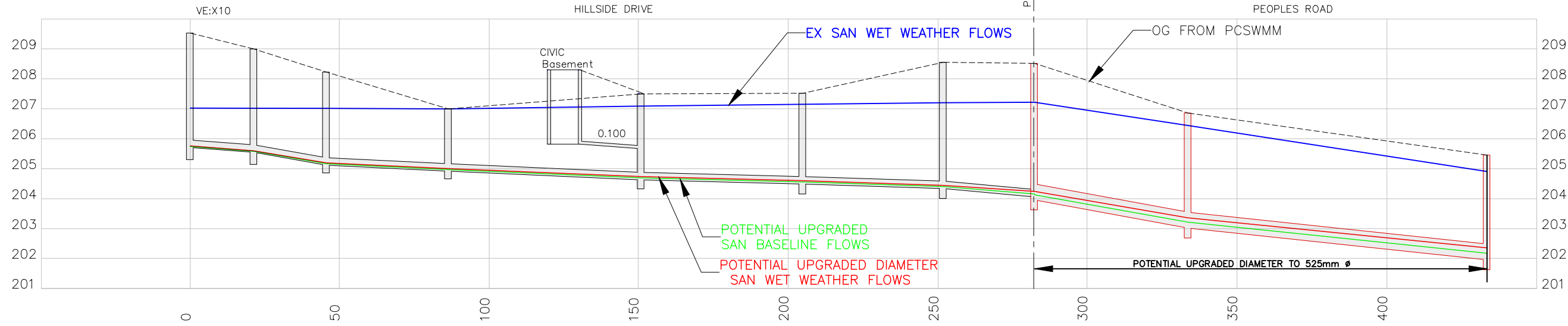
DESIGNED	JST
DRAWN	JST
CHECKED	RET
PROJECT No.	60625445
SCALE	NTS
DATE	APRIL 2023



AECOM
 AECOM Canada Ltd.
 523 Wellington Street East, Suite 1500, Mississauga, Ontario, Canada
 P6A2M4 T705.942.2872 F705.942.3842



NOTE:
1. Wet weather flows consist of base flows x 2.5



P:\60625445 - Flooding Assessment - Class EA\900-CAD_015\910-CAD\report drawing\60625445 - BASEPLAN - plan and profiles - flooding assessment.dwg, Pictorial: 2021/07/09 13:11



AECOM

AECOM Canada Ltd.
523 Wellington Street East, Suite 1500, Mississauga, Ontario, Canada
P6A2M4 T705.942.2812 F705.942.3842

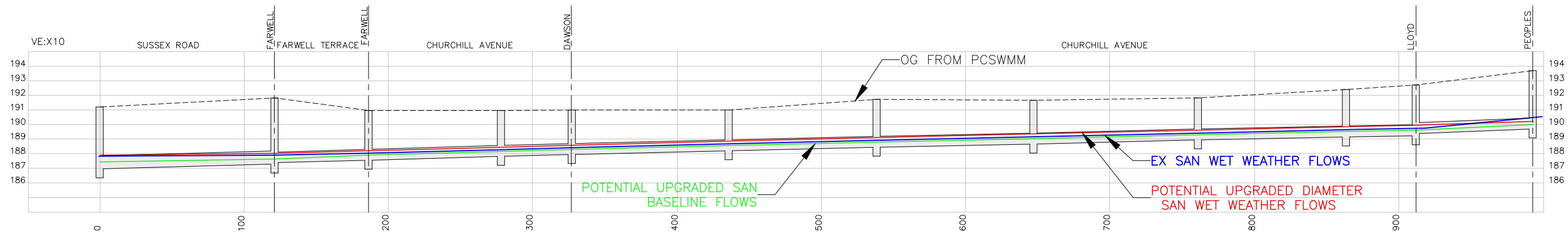
DESIGNED	JST
DRAWN	JST
CHECKED	JST
PROJECT No.	60625445
SCALE	NTS
DATE	APRIL 2023

PLAN AND PROFILE
Flooding Assessment Class EA
Upgraded Peoples Road Sanitary Sewer Alternative - Impact
to Hillside Drive Sanitary Sewer

DRAWING No.
2



NOTE:
 1. Wet weather flows consist of base flows x 2.5.
 2. Downstream system Capacities to be confirmed through Wastewater Master Plan all pipes model.



DRAWING No.

3

PLAN AND PROFILE

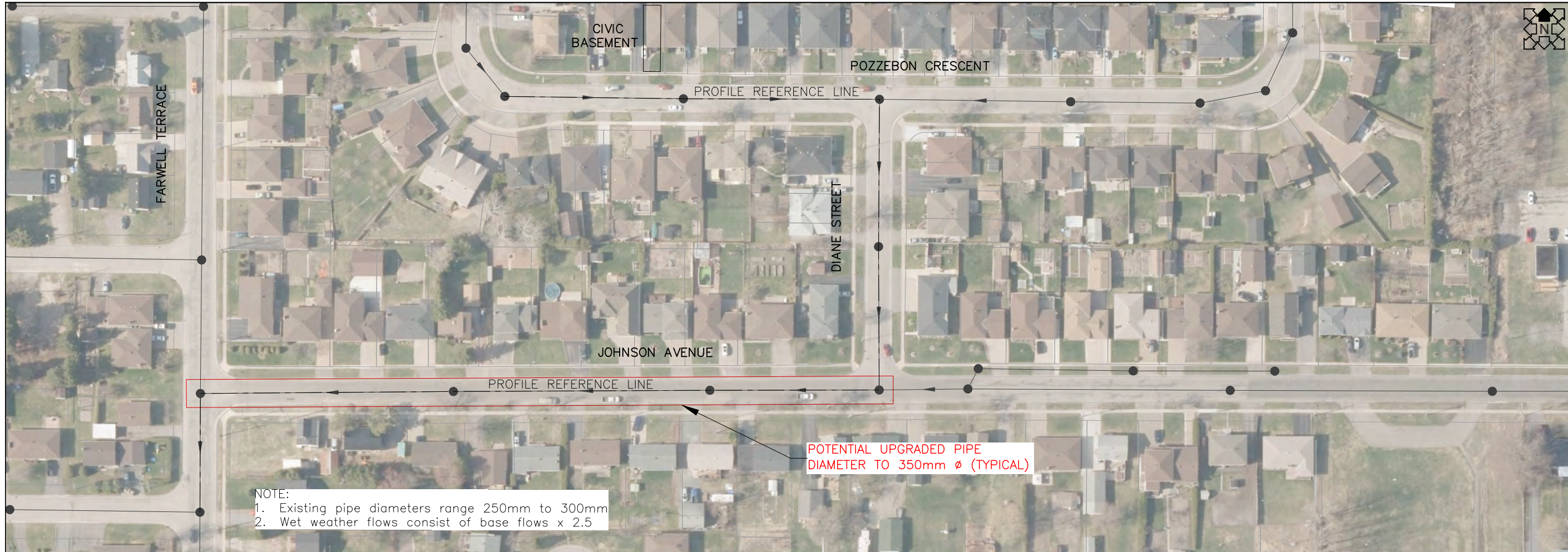
Flooding Assessment Class EA
 Upgraded Peoples Road Sanitary Sewer Alternative - Impact
 to Churchill Avenue Sanitary Sewer

DESIGNED	JST
DRAWN	JST
CHECKED	RET
PROJECT No.	60625445
SCALE	NTS
DATE	APRIL 2023

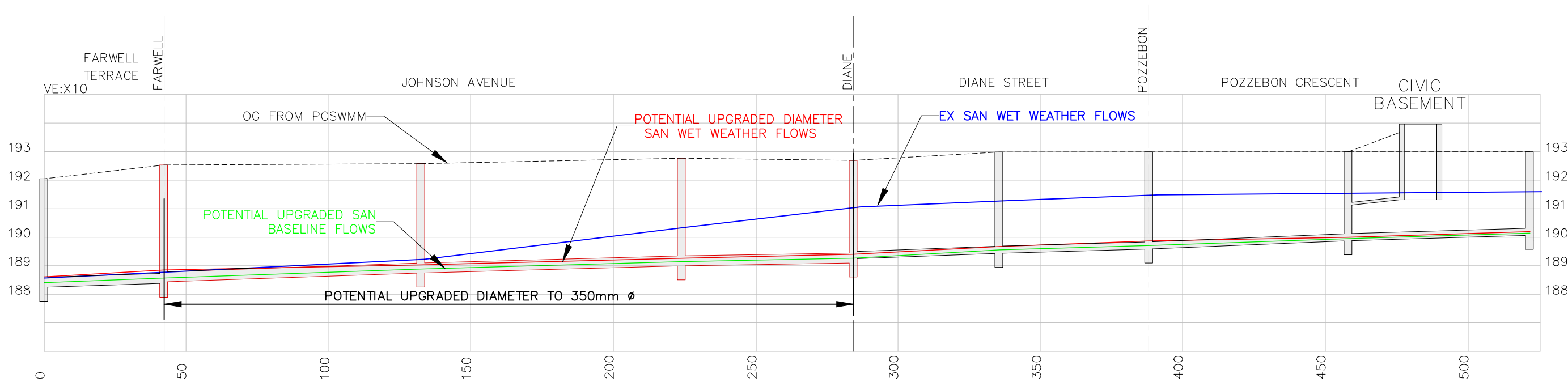


AECOM

AECOM Canada Ltd.
 523 Wellington Street East, Suite 1500, Mississauga, Ontario, Canada
 P6A2M4 T705.942.2872 F705.942.3842



NOTE:
 1. Existing pipe diameters range 250mm to 300mm
 2. Wet weather flows consist of base flows x 2.5



DRAWING No.

4

PLAN AND PROFILE

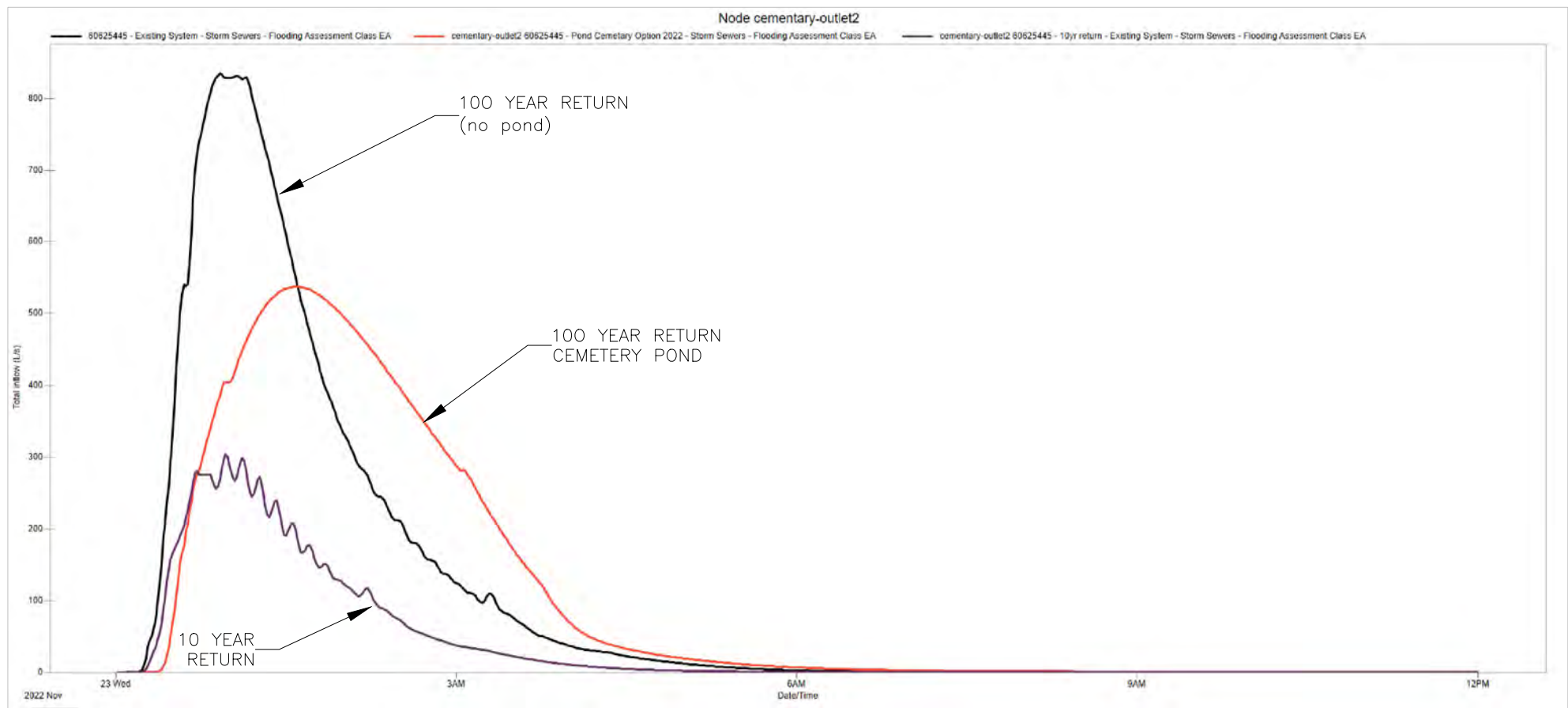
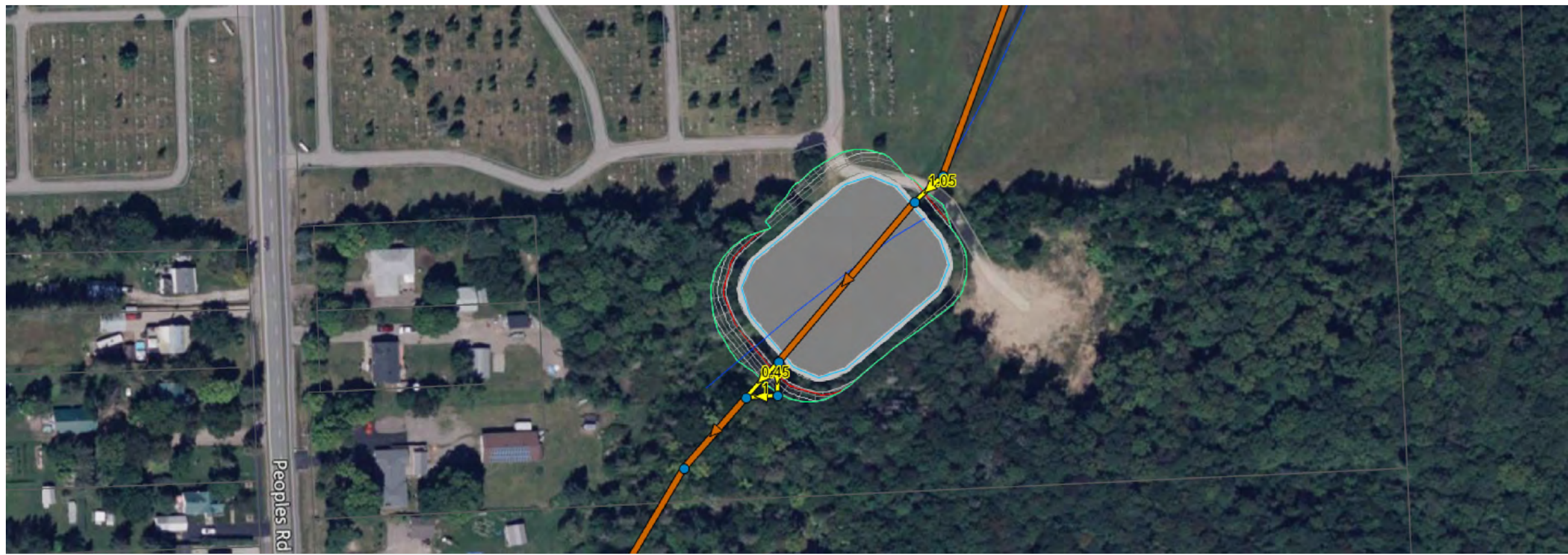
Flooding Assessment Class EA
 Upgraded Johnson Avenue Sanitary Sewer Alternative -
 Impact to Johnson Avenue Sanitary Sewer

DESIGNED	JST
DRAWN	JST
CHECKED	RET
PROJECT No.	60625445
SCALE	NTS
DATE	APRIL 2023



AECOM

AECOM Canada Ltd.
 523 Wellington Street East, Suite 1500, Mississauga, Ontario, Canada
 P6A2M4 T705.942.2672 F705.942.3842



DRAWING No.

5

PLAN AND PROFILE

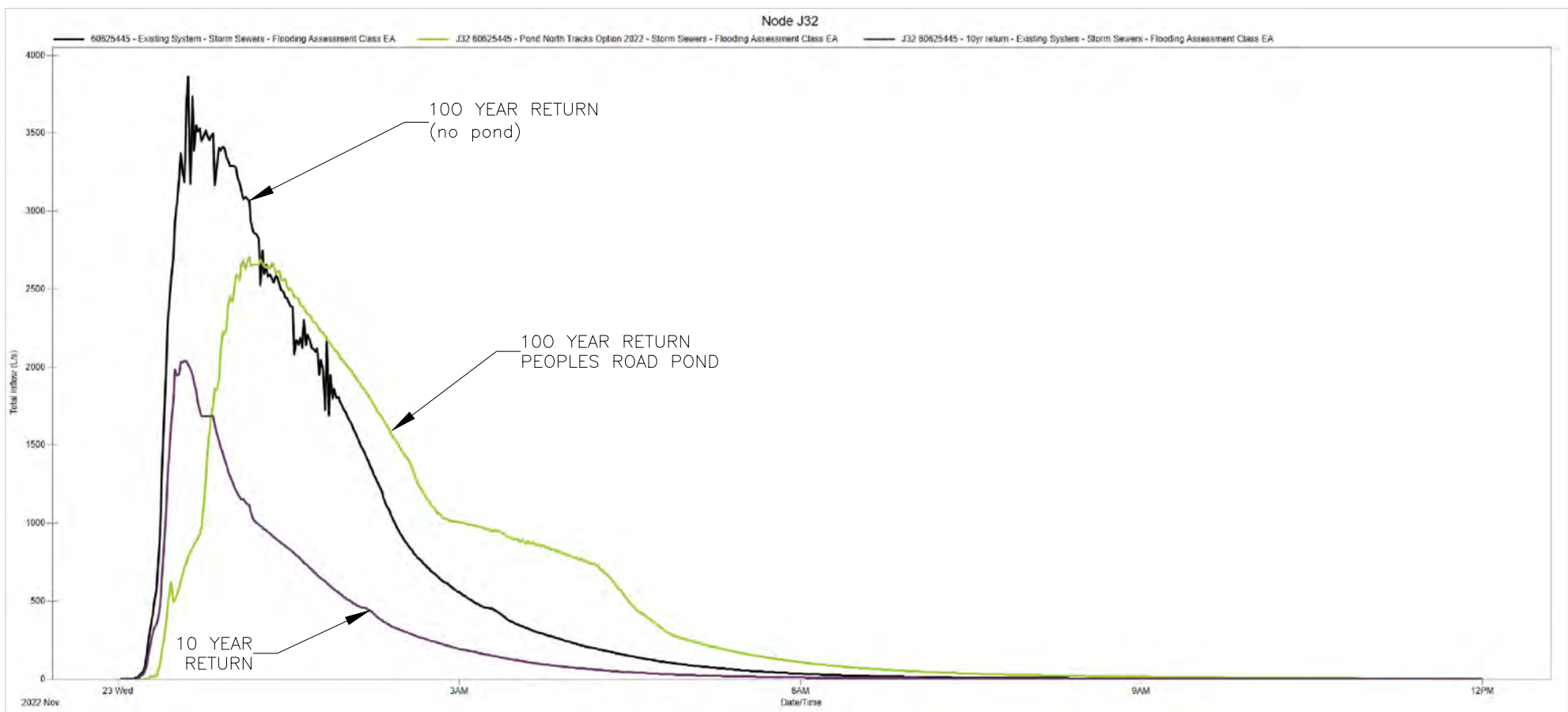
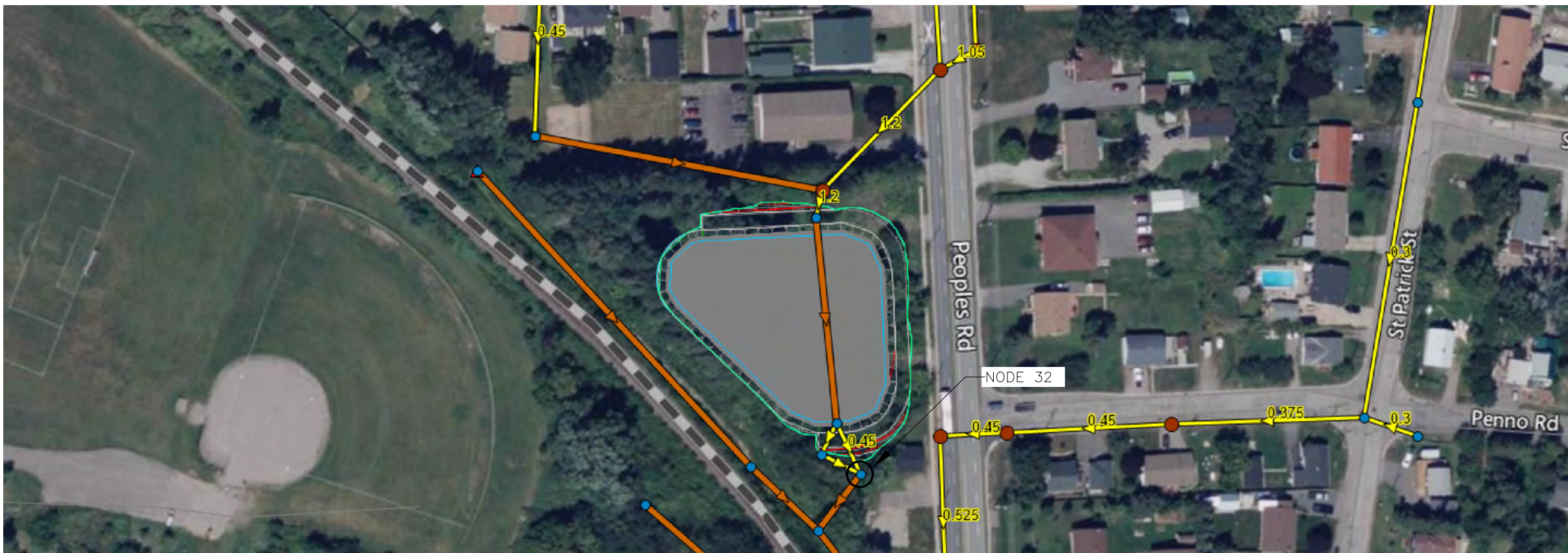
Flooding Assessment Class EA
 CEMETERY DRY POND ALTERNATIVE - IMPACT TO
 DOWNSTREAM PEAK STORM FLOWS

DESIGNED	JST
DRAWN	JST
CHECKED	RET
PROJECT No.	60625445
SCALE	NTS
DATE	MAR 2023



AECOM

AECOM Canada Ltd.
 523 Wellington Street East, Suite 1500, Mississauga, Ontario, Canada
 P6A2M4 T705.942.2872 F705.942.3842



DRAWING No.

6

PLAN AND PROFILE

Flooding Assessment Class EA

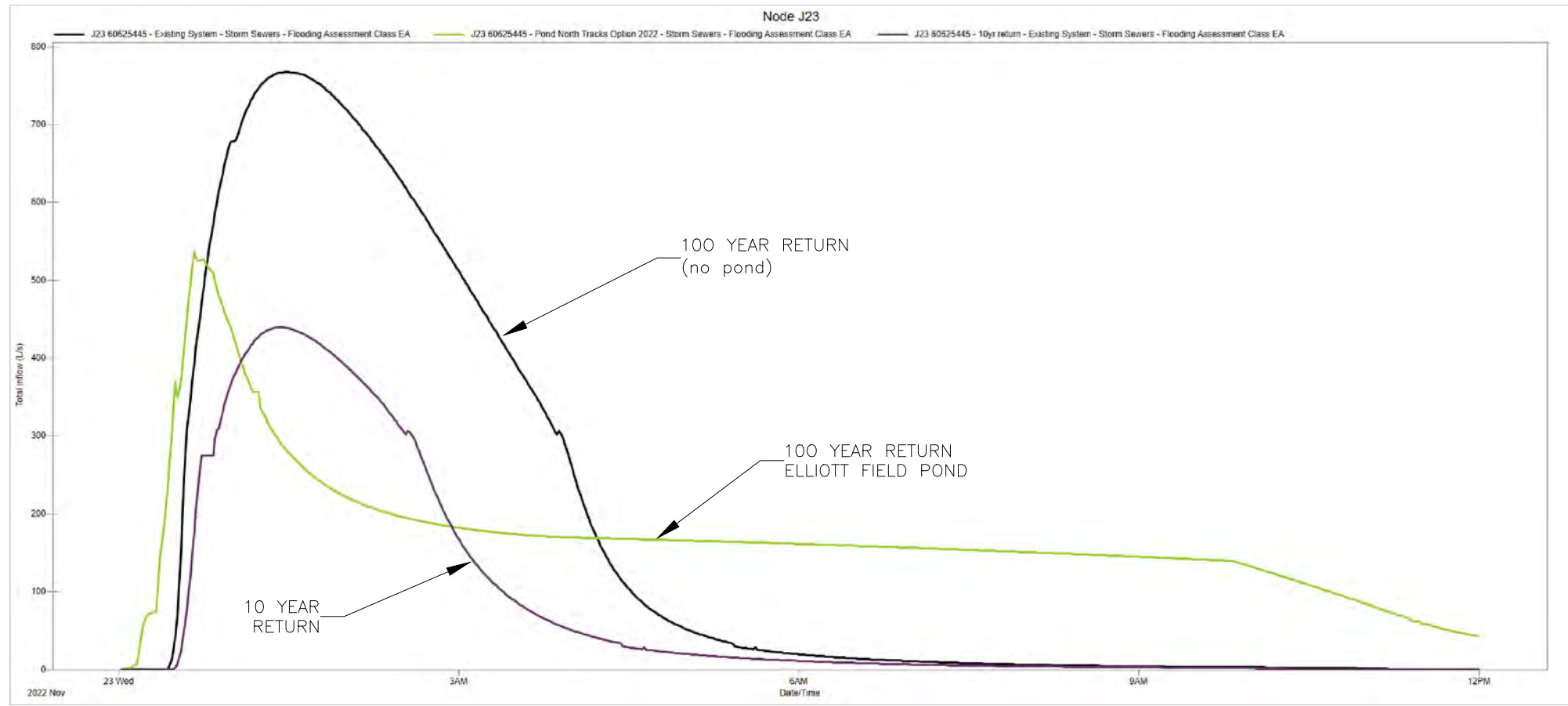
PEOPLES ROAD DRY POND ALTERNATIVE - IMPACT TO
DOWNSTREAM PEAK STORM FLOWS

DESIGNED	JST
DRAWN	JST
CHECKED	RET
PROJECT No.	60625445
SCALE	NTS
DATE	MAR 2023



AECOM

AECOM Canada Ltd.
523 Wellington Street East, Suite 1500, Mississauga, Ontario, Canada
P6A2M4 T705.942.2872 F705.942.3842



DRAWING No.

7

PLAN AND PROFILE

Flooding Assessment Class EA

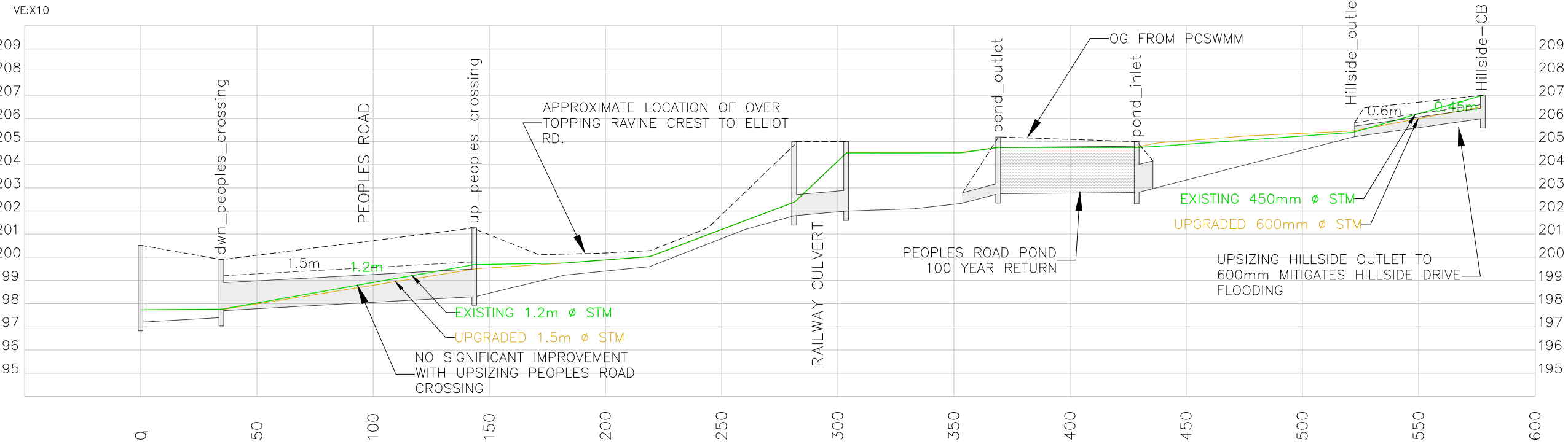
ELLIOTT PARK DRY POND ALTERNATIVE - IMPACT TO DOWNSTREAM PEAK STORM FLOWS

DESIGNED	JST
DRAWN	JST
CHECKED	RET
PROJECT No.	60625445
SCALE	NTS
DATE	MAR 2023



AECOM

AECOM Canada Ltd.
523 Wellington Street East, Suite 1500, Mississauga, Ontario, Canada
P6A2M4 T705.942.2872 F705.942.3842



DRAWING No. **8**

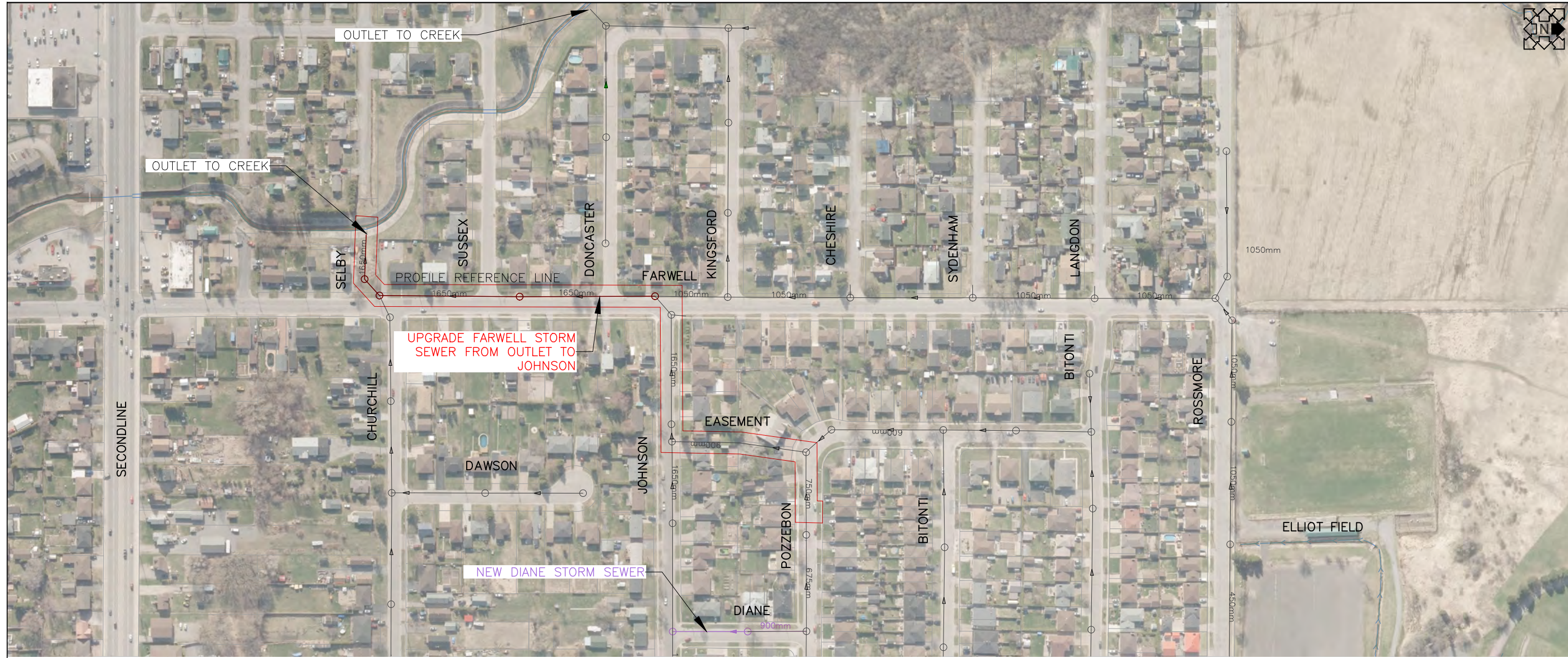
PLAN AND PROFILE

Flooding Assessment Class EA

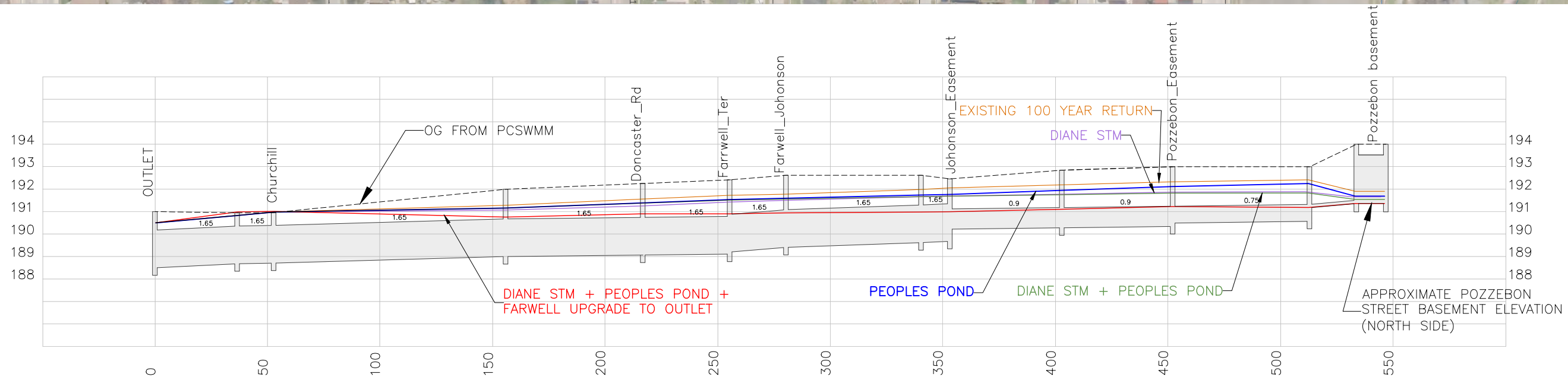
HILLSIDE DRIVE STORM OUTLET UPGRADE AND PEOPLES ROAD
DRY POND ALTERNATIVES - IMPACT TO DOWNSTREAM PEAK
STORM FLOWS

DESIGNED	JST
DRAWN	JST
CHECKED	RET
PROJECT No.	60625445
SCALE	NTS
DATE	MAR 2023

AECOM Canada Ltd.
523 Wellington Street East, Suite 1500, Mississauga, Ontario, Canada
P6A2M4 T705.942.2872 F705.942.3842



VE:X10



DRAWING No.

9

PLAN AND PROFILE

Flooding Assessment Class EA
 DIANE STREET AND FARWELL TERRACE STORM SEWER
 UPGRADES AND PEOPLES ROAD DRY POND ALTERNATIVES
 IMPACT TO DOWNSTREAM PEAK STORM FLOWS

DESIGNED	JST
DRAWN	JST
CHECKED	RET
PROJECT No.	60625445
SCALE	NTS
DATE	MAR 2023



AECOM

AECOM Canada Ltd.
 523 Wellington Street East, Suite 1500, Mississauga, Ontario, Canada
 P4A2M4 T705.942.2812 F705.942.3842