



Welcome!

City of Sault Ste. Marie
Municipal Class Environmental
Assessment for:

Great Northern Road / Second Line Traffic Network



November 22, 2023

Public Information Centre #2

Introduction

Study Purpose and Process

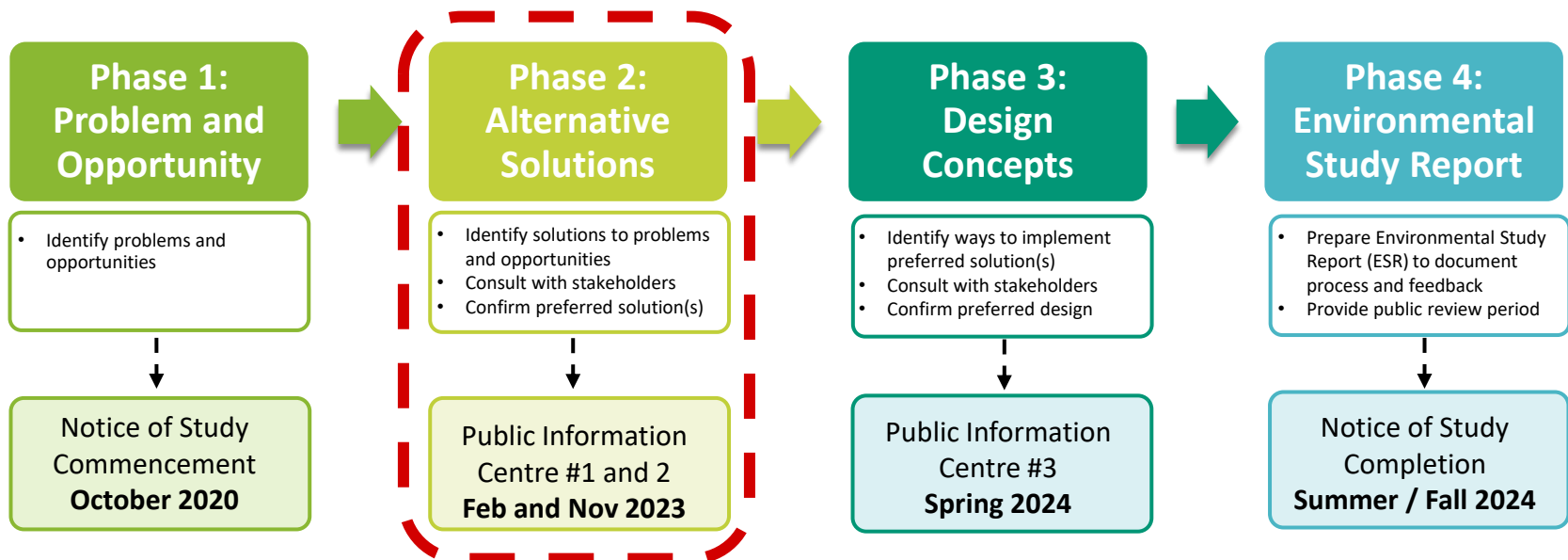


Study Purpose

- The City of Sault Ste. Marie is undertaking a study to reduce congestion and improve connectivity in the area of Great Northern Road (GNR) and Second Line.

Study Process

- The study is following the **Schedule C - Municipal Class Environmental Assessment (Class EA)** process which is designed to guide planning and approval of significant municipal infrastructure projects as per Ontario's Environmental Assessment Act. The four phases of the **Schedule C Class EA** are:



Background Information

Existing Traffic Conditions

Study Area

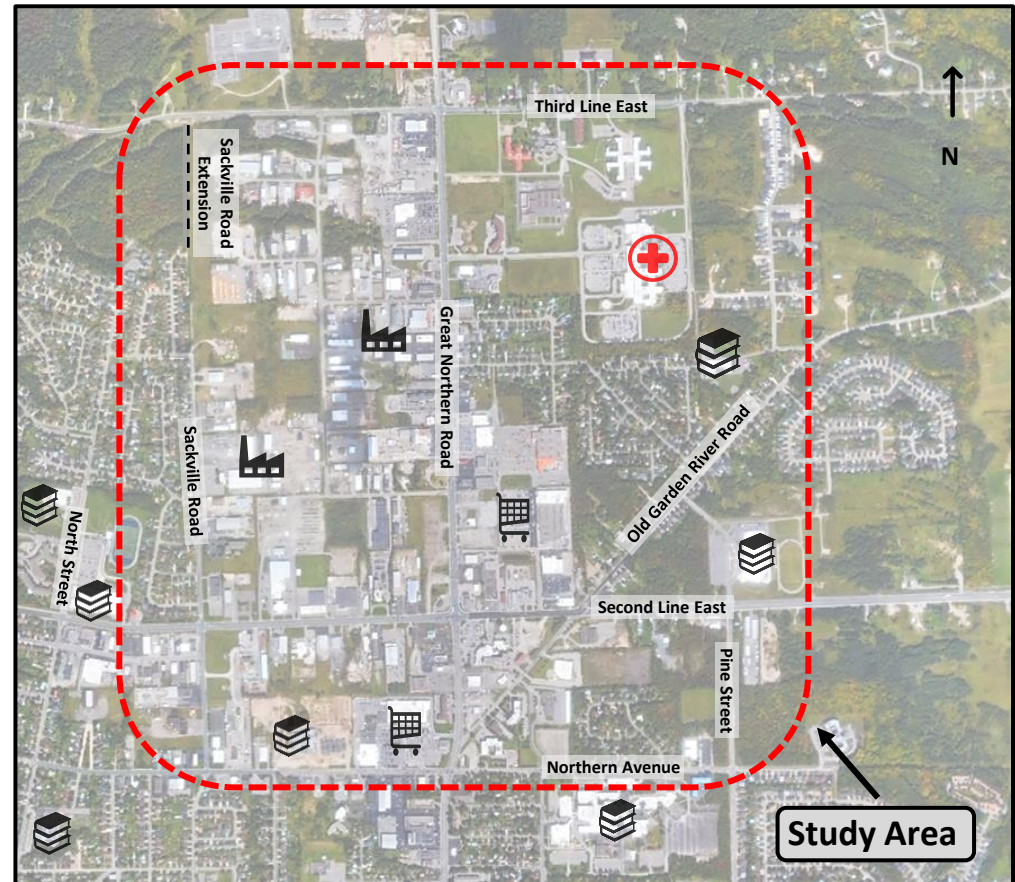
- Experiences the heaviest vehicular traffic in the city.
- Limited alternative access to commercial and industrial developments.
- Difficult for vehicles to turn left out of commercial developments.
- Limited alternative and active transportation facilities

GNR / Second Line Intersection

- Forms part of the Trans-Canada Highway.
- Serves local and provincial traffic.

Sackville Road Extension

- Environmental Assessment and detailed design has been completed for proposed extension of Sackville Rd.
- Construction of road extension proposed to commence in 2025.



Educational Institution



Industrial Park



Commercial Development



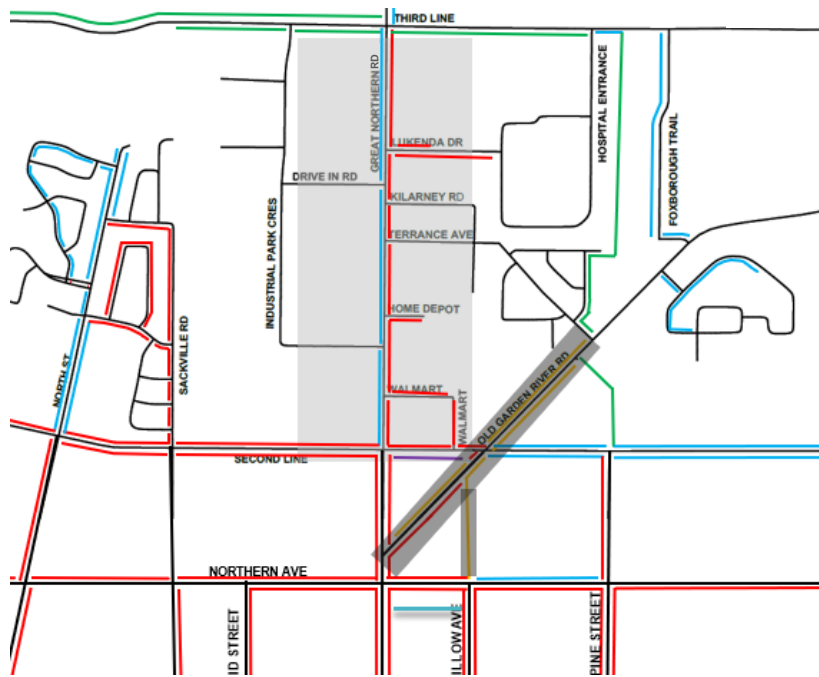
Sault Area Hospital

Background Information

Existing Active Transportation Network



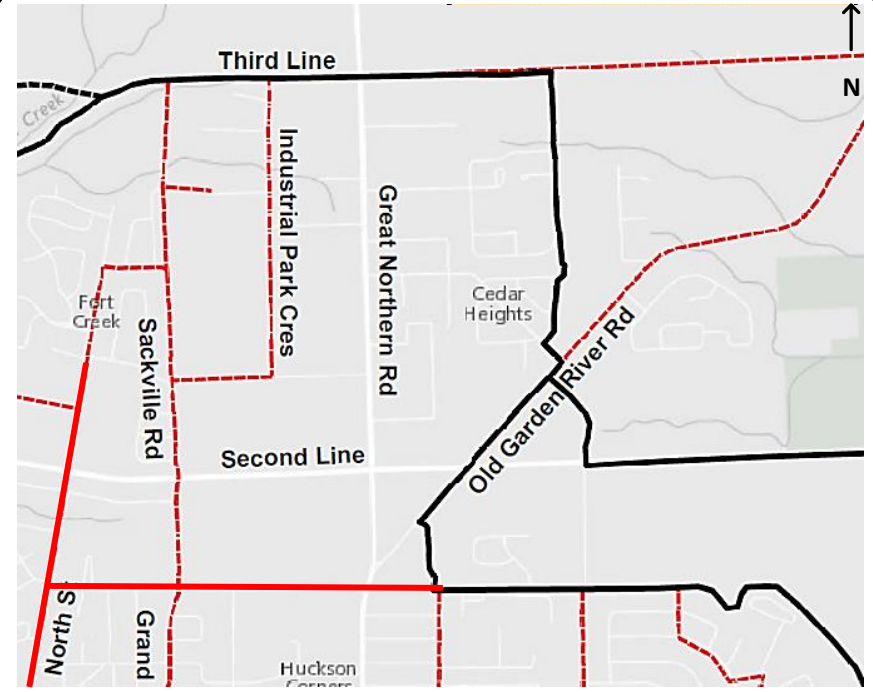
Sidewalk Network



(Second Line/Great Northern Road Traffic Study, 2018)

- Existing Sidewalk (≥ 1.5m)
- Existing Sidewalk (≤ 1.2m)
- Existing Paved Shoulder/Trail (Hub Trail)
- Existing Paved Shoulder/Trail (Hub Trail)
- Recommended Improvements (within 2 years of 2018)
- Recommended Improvements (within 5 years of 2018)

Cycling Network



(Second Line/Great Northern Road Traffic Study, 2018)

- Primary Network - Constructed (Hub Trail)
- - Primary Network - Planned
- Secondary Network - Constructed
- - Secondary Network - Planned

Problems

The city has grown around the GNR / Second Line intersection causing traffic congestion.

Few alternative routes exist within the study area to reduce demand at the GNR / Second Line intersection.

Active transportation is limited within the study area.



Opportunities

Establish a secondary road network to reduce congestion and improve flow.

Connect commercial / industrial areas between Sackville Rd, Second Line, Old Garden Rd, Northern Ave, and GNR.

Remove local traffic from main hospital route.

Improve active transportation infrastructure.

Identify infrastructure and facility improvements.



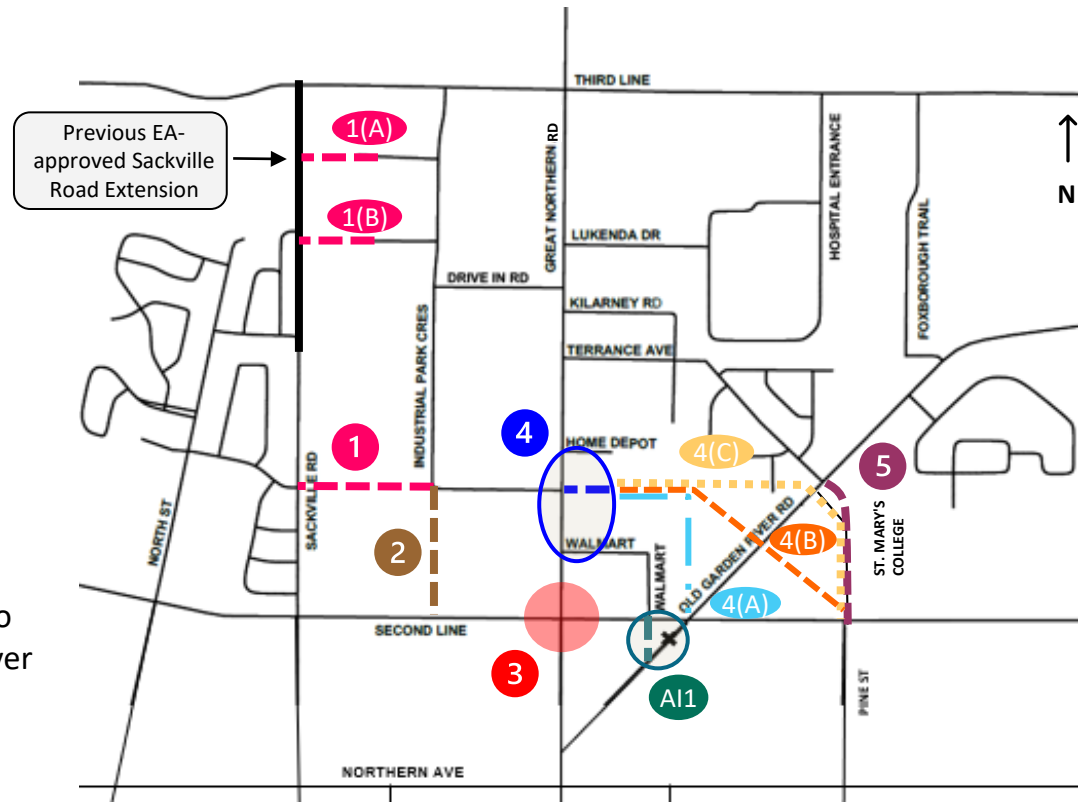
What is the purpose of this Public Information Centre (PIC #2)?

- Given the feedback received at PIC #1, the alternative solutions have been revised to better suit the needs of the public / stakeholders
- We are looking for the public's / stakeholder's input on the revised alternative solutions

The following **Alternative Solutions** are being considered to address the **Problems and Opportunities**:

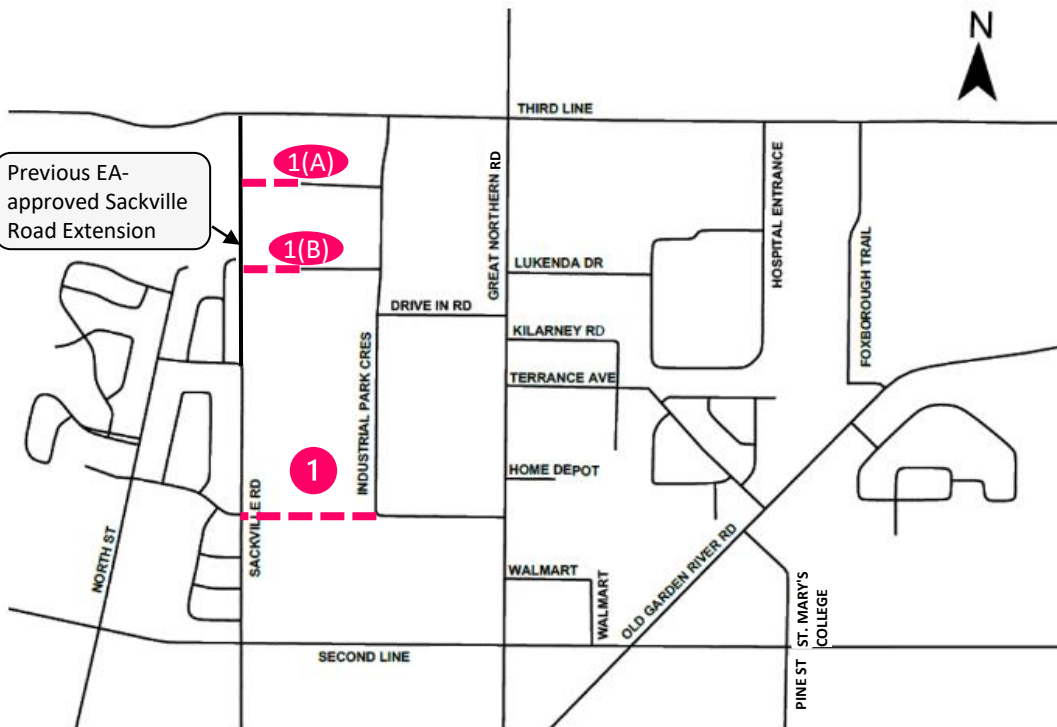
- 1 Sackville Rd connection(s) to Industrial Park Cr [1(A and B) optional]
- 2 Industrial Park Cr connection to Second Line
- 3 Double left turn at GNR and Second Line intersection
- 4 New traffic light at Industrial Park Cr and GNR intersection. Removal of existing traffic lights at Home Depot and Walmart Entrances
 - 4(A) Connection to Old Garden River Rd / Second Line intersection
 - 4(B) Connection to Second Line and Pine St intersection
 - 4(C) OR
- AI1 Additional Improvements – Potential to improve intersection at Old Garden River Rd / Second Line
- 5 Extension of Pine St to Terrance Ave

Do Nothing: maintain the existing transportation network



Alternative Solution 1

1 East-west connection(s) between Sackville Rd and Industrial Park Cr [1(A and B) optional]



Previous EA-approved Sackville Road Extension

Legend
- - - Alternative Solution 1

Benefits

- Options 1(A and B) can be included to improve connectivity
- Provides a new route for traffic (coming from the west) destined to the commercial area along GNR
- Relieves northbound left –turns at the GNR / Second Line intersection
- Some land required for the roadway is owned by the City of Sault Ste. Marie
- Opportunity to implement active transportation connection from Sackville Rd to Industrial Park Cr

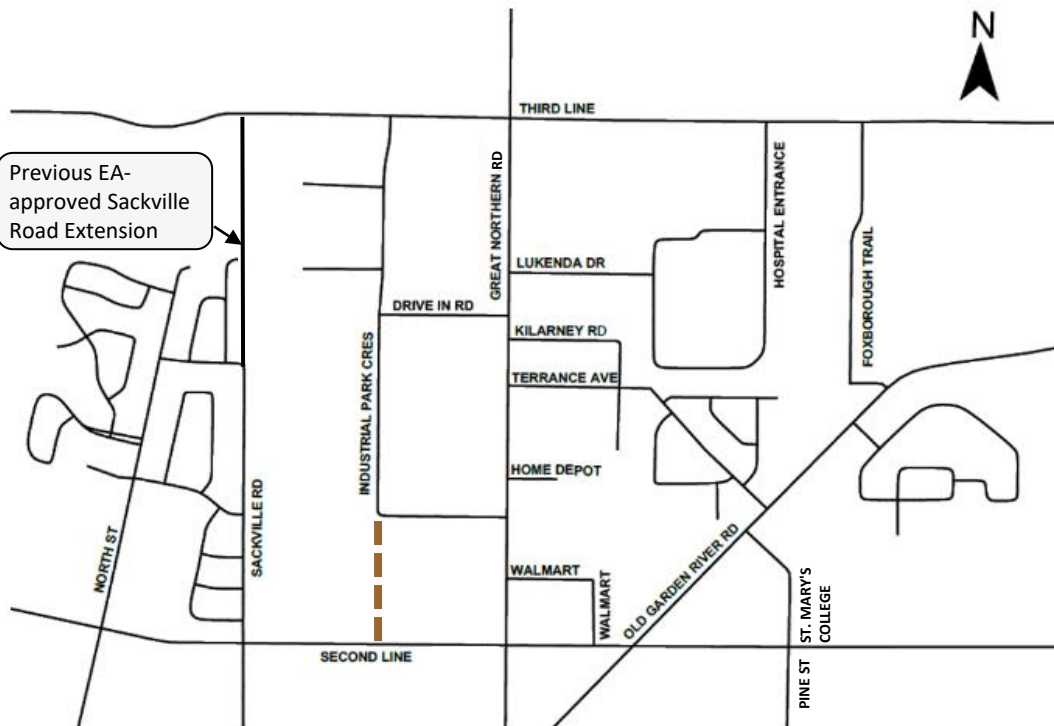
Challenges

- Minor increase in traffic for residential area west of Sackville Rd
- Potential for property impacts and land acquisitions
- Adjacent roadway upgrades may be required to accommodate increased traffic

Alternative Solution 2

2

Southerly extension of Industrial Park Cr to Second Line



Legend

— Alternative Solution 2

Benefits

- Improves operations by reducing left-turns at the GNR / Second Line intersection
- Provides separation of commercial / industrial traffic from the residential traffic on Sackville Rd
- Provides access to development west of GNR and a secondary route for north- and southbound traffic

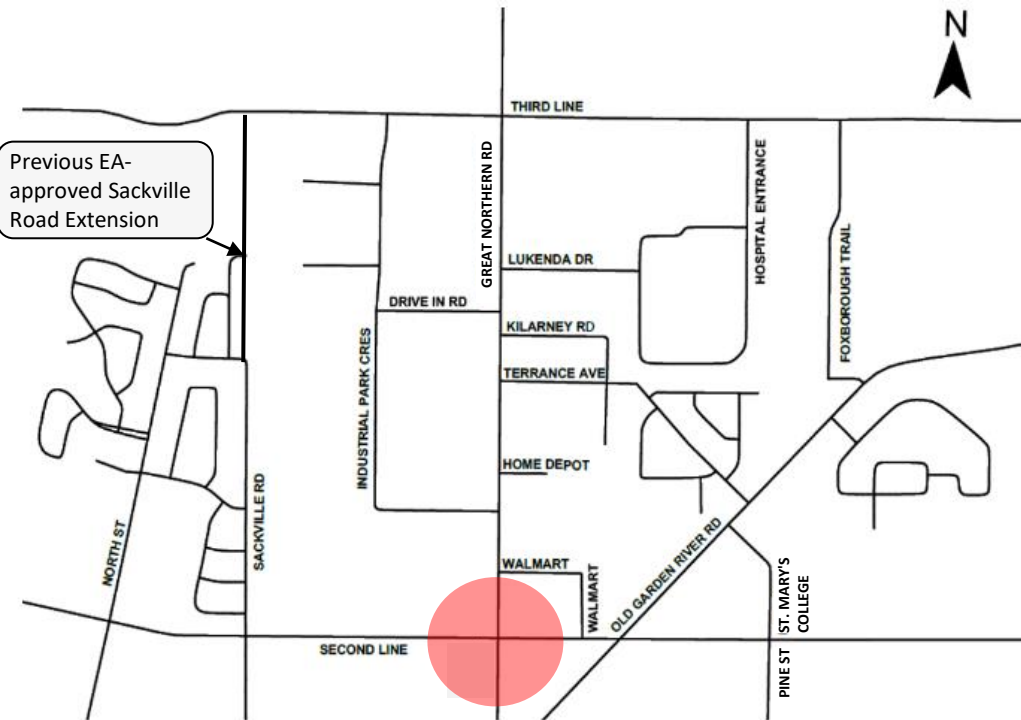
Challenges

- Traffic signal required at Second Line / Industrial Park Cr intersection
- Potential for property impacts and land acquisitions
- Upgrades to Industrial Park Cr may be required to accommodate increased traffic
- Limited opportunity to improve active transportation network connectivity as there are no cycling facilities on Second Line

Alternative Solution 3

3

Double left-turn at GNR and Second Line Intersection



Benefits

- Improves left-turn operations at GNR / Second Line intersection

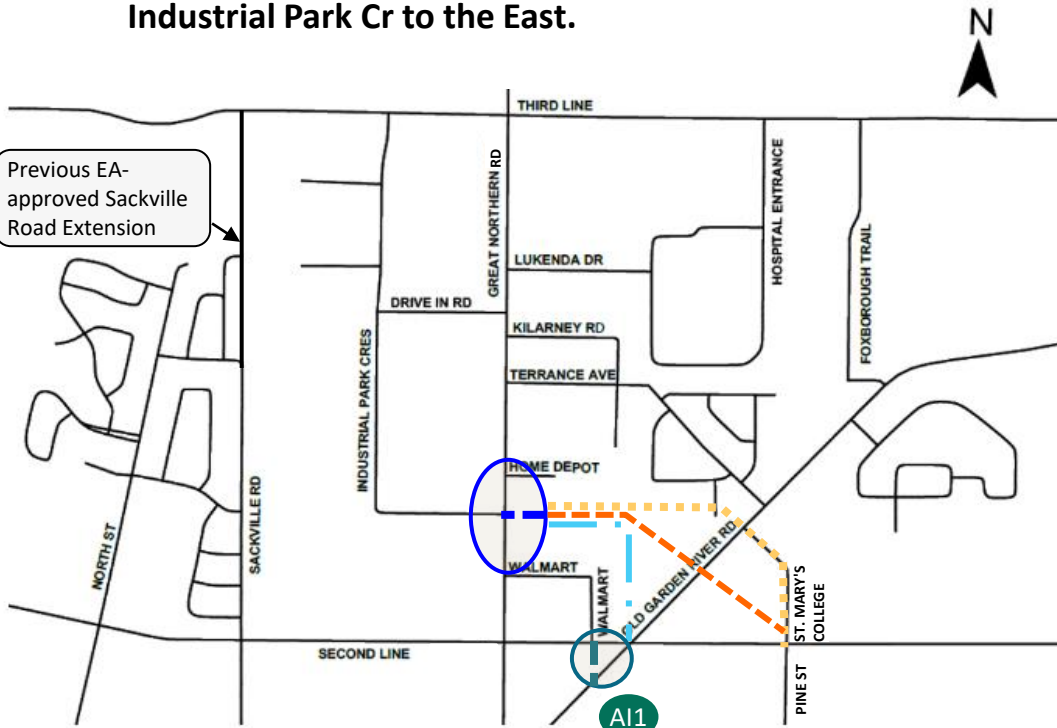
Challenges

- Intersection widening is difficult given the built-up nature of the properties adjacent to the intersection
- Does not provide an alternate route for traffic and does not relieve GNR / Second Line intersection
- Does not provide opportunity to improve active transportation network connectivity

Alternative Solution 4

4

New traffic light at Industrial Park Cr and GNR intersection. Removal of existing traffic lights at Home Depot and Walmart Entrances. Provides opportunity for extension of Industrial Park Cr to the East.



Legend

- — — Alternative Solution 4
- — — Alternative Solution 4(A)
- — — Alternative Solution 4(B)
- — — Alternative Solution 4(C)
- — — Additional Improvements – Potential to improve intersection at Old Garden River Rd / Second Line

Benefits

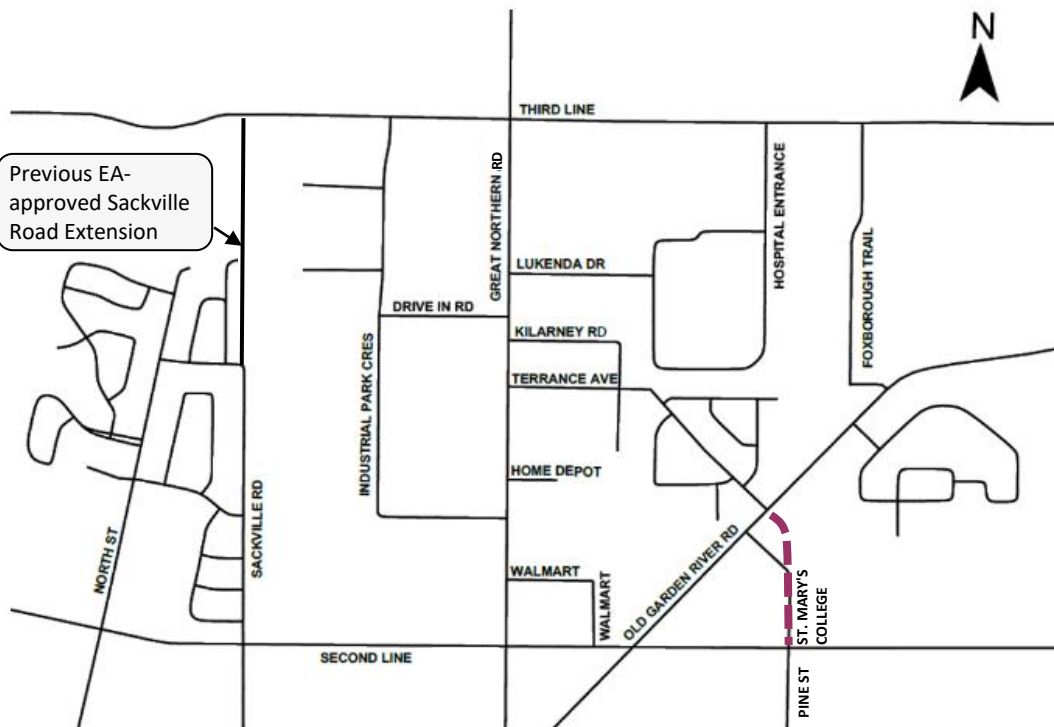
- Optimizes traffic light location and reduces total number of traffic lights
- Potential to improve traffic circulation and access to industrial / commercial businesses
- Opportunity to connect to Old Garden River Rd or Pine St forming alternative east-west corridor
- Opportunity to provide new active transportation route avoiding GNR / Second Line intersection
- Options 4(A-C) provide opportunity to improve Old Garden River Rd / Second Line intersection skew.

Challenges

- Without including options 4(A-C), option 4 does not provide an alternate route for traffic nor does it relieve congestion at the GNR / Second Line intersection
- Potential for property impacts and land acquisitions

Alternative Solution 5

5 Extension of Pine St to Terrance Ave via St. Mary's College Driveway



Legend

--- Alternative Solution 5

Benefits

- Provides alternate route for traffic from the east to avoid the GNR / Second Line intersection

Challenges

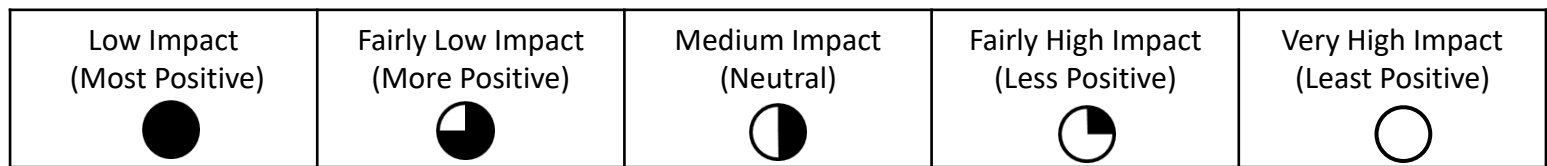
- Does not provide alternate route for through traffic
- Potential for property impacts and land acquisitions
- Diverts minimal traffic volume from GNR / Second Line intersection
- Does not provide opportunity to improve active transportation network connectivity
- Routes traffic through a residential area

EA Phase 2

Evaluation of Alternative Solutions



| | Do Nothing | Alternative 1 | Alternative 2 | Alternative 3 | Alternative 4 | Alternative 4(A) | Alternative 4(B,C) | Alternative 5 |
|------------------------------|---------------------------|--|--|--|--|--|--|----------------------|
| Alternatives / Criteria | Maintain Existing Network | Sackville Rd Connection(s) to Industrial Park Cr | Industrial Park Crescent Connection to Second Line | Double left turn at GNR / Second Line Intersection | Removal of two traffic lights and introducing a single new traffic light | Connection to Old Garden River Rd / Second Line intersection | Connection to Second Line and Pine St intersection | Pine St Extension |
| Socio-Economic Environment | | | | | | | | |
| Cultural Environment | | | | | | | | |
| Natural Environment | | | | | | | | |
| Transportation and Technical | | | | | | | | |
| Overall | | | | | | | | |
| Next Step | Do Not Carry Forward | Carry Forward | Do Not Carry Forward | Do Not Carry Forward | Carry Forward | Do Not Carry Forward | Carry Forward | Do Not Carry Forward |



EA Phase 2

Recommended Alternative Solution(s)

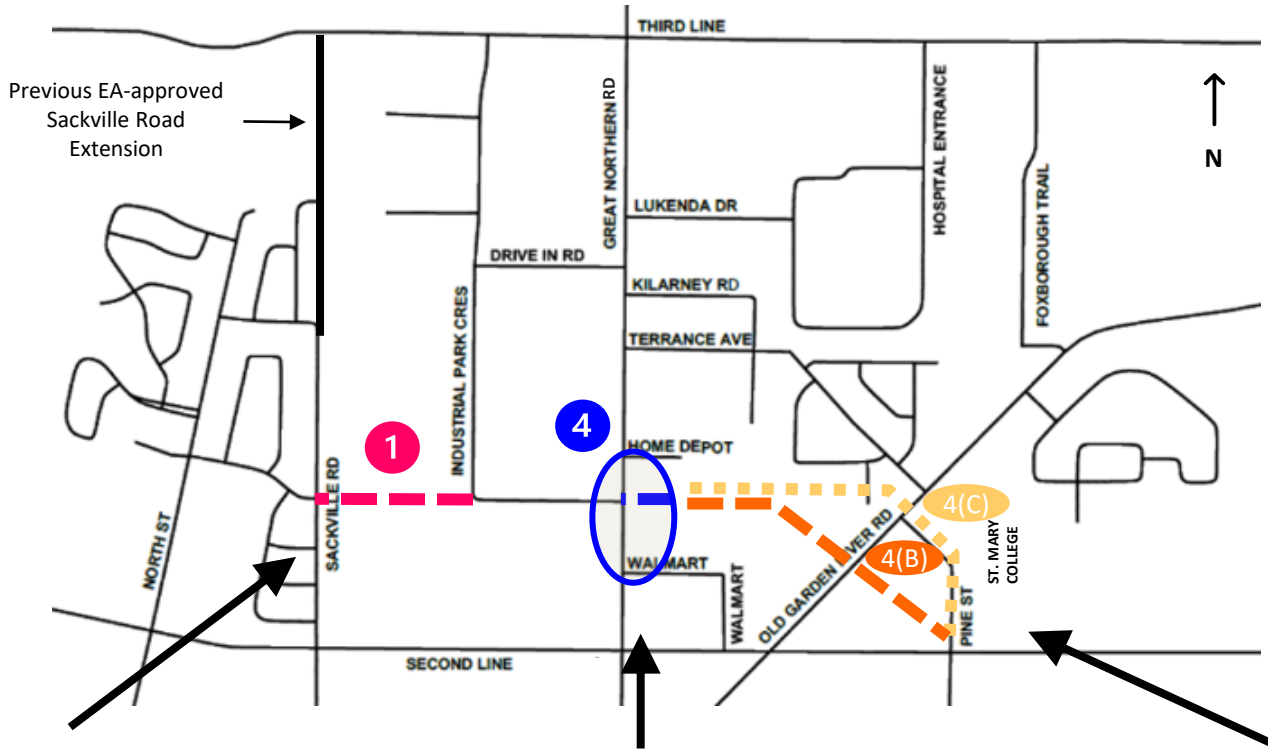


Reduces and optimizes traffic lights

Provides new east-west corridor

Reduces traffic congestion and improves flow

Provides new active transportation corridor



Step 1

Re-evaluate

Step 2

Re-evaluate

Step 3

1 Sackville Rd connection to Industrial Park Cr.

4 New traffic light at Industrial Park Cr and GNR intersection. Removal of existing traffic lights at Home Depot and Walmart Entrances.

4(B)
OR
4(C) Connection to Second Line and Pine St intersection.

Consultation

Next Steps and Staying Involved



What are the next steps?

- Review and consider all feedback
- Confirm and finalize the preferred solution(s)
- Develop design concepts and evaluate the design alternatives
- Hold another Public Information Centre to obtain feedback on design concepts for the preferred solution(s)
- Refine the design based on feedback
- Prepare the Environmental Study Report to document the findings

How to Stay Involved



Provide your Feedback

Please provide your feedback on this PIC material by **December 22, 2023**



Join the Project Mailing List

Reach out to us by email

GNRTrafficNetworkEA@tulloch.ca



Review Study Materials on the City's website:

<https://saultstemarie.ca/Government/City-Departments/Public-Works-Engineering-Services/Engineering-and-Planning/Engineering-and-Construction/Class-EA/Great-Northern-Road-and-Second-Line-East.aspx>

Project Contacts

Maggie McAuley, P.Eng.

City of Sault Ste. Marie

Project Manager

m.mcauley@cityssm.on.ca

(705) 759-5385

John McDonald, P.Eng.

TULLOCH Engineering

Consultant Project Manager

GNRTrafficNetworkEA@tulloch.ca

(705) 949-1457