

SEE TRANSIT TERMINAL
DOWNTOWN AREA MAP

**TRANSIT TERMINAL
DOWNTOWN AREA**

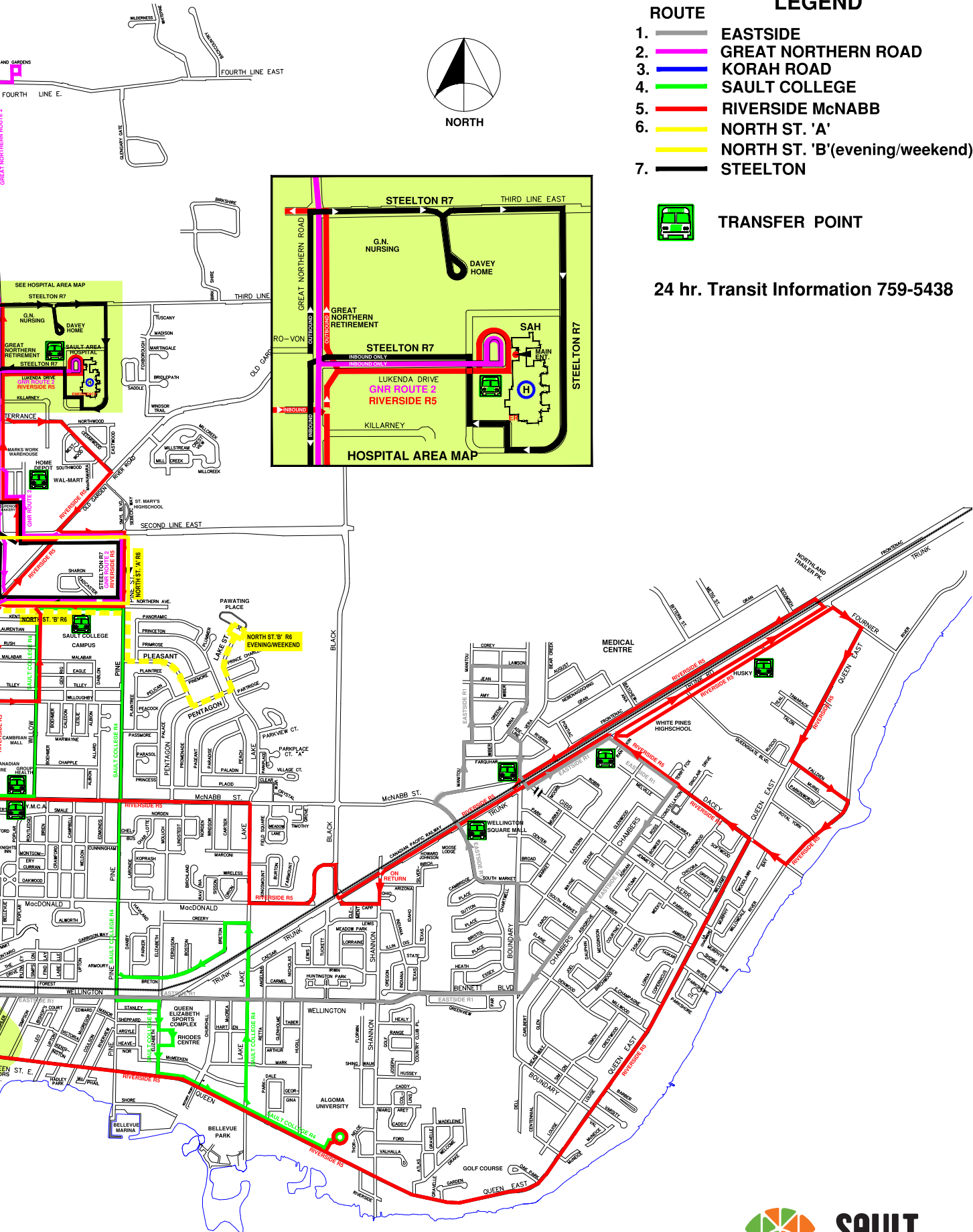
SSM TRANSIT ROUTE MAP LEGEND

- ROUTE**
1. EASTSIDE
 2. GREAT NORTHERN ROAD
 3. KORAH ROAD
 4. SAULT COLLEGE
 5. RIVERSIDE McNABB
 6. NORTH ST. 'A'
 7. NORTH ST. 'B'(evening/weekend)
 7. STEELTON



TRANSFER POINT

24 hr. Transit Information 759-5438



**SAULT
STE. MARIE**

Sault Ste. Marie Transit Accessibility Equipment & Features Conventional Buses

All of Sault Transit's Conventional bus fleet is low floor accessible, with the following features:

- The bus lowers
- The ramp folds out, lowered upon request
- Back-board system for wheelchair placement
- Grab bars, handholds, handrails and stanchions are standard equipment on all conventional buses

Sault Ste. Marie Transit also operates a Parabus Service. For additional information, please visit www.saultstemarie.ca/parabus or call **705-942-1404**

Visit www.saultstemarie.ca/transit for schedules, charter information, Parabus transit information and more.



SAULT STE. MARIE ON DEMAND

Sault Ste. Marie On Demand is available for Saturday & Sunday Evenings from 7:15 p.m.-12:00 a.m. with a final booking time for a ride at 11:30 p.m.

If you do not have a smart phone, please call **705-759-5438** to book a ride.

Cash fare for all riders **\$3.00** • Exact change required

Children 12 & Under ride free when accompanied by a responsible adult

****Reminder: bus passes are non-refundable and are non-replaceable****

Get your pass today at the following locations:

Transit Terminal - 160 Queen St. East

Transit Office - 111 Huron St. • Rome's - Cambrian Mall

Regular Transit

Effective Monday, April 19, 2021

Adult 31 Day Pass	\$ 69
20 Ride Multi-Pass	\$ 47.50
Youth 31 Day Pass (18 & under)	\$ 30
Semester Pass (Algoma & Sault College only)	\$ 190
Senior 31 Day Pass (60 & over)	\$ 59
Senior 6 Ride Pass (60 & over)	\$ 9.50
Senior 12 Ride Pass (60 & over)	\$ 19

Para Bus Transit

(wheelchair & dialysis)

Effective Monday, April 19, 2021

40 Ride Pass	\$ 83
Senior 12 Ride Pass (60 & over)	\$ 19
Senior 6 Ride Pass (60 & over)	\$ 9.50

Our Goal: To Become More Accessible

SHOW YOU CARE

Stand up and give your seat
to someone in need.



When you are on public transit,
please read and respect these signs.