



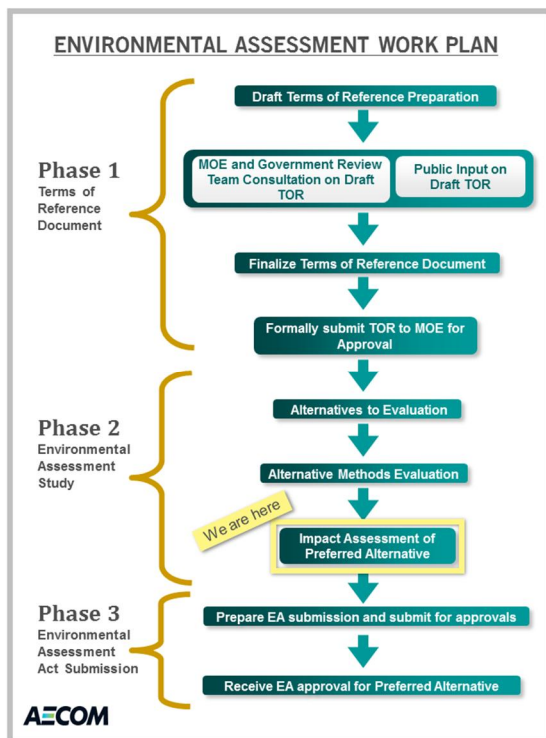
THE CITY OF SAULT STE. MARIE

JANUARY, 2016 NEWSLETTER

SOLID WASTE MANAGEMENT ENVIRONMENTAL ASSESSMENT

ENVIRONMENTAL ASSESSMENT (EA) PROCESS

The City of Sault Ste. Marie is undertaking an Environmental Assessment (EA) Study to determine the preferred method for managing its municipal solid waste. The EA Process is a transparent decision-making process used to promote good environmental planning by assessing potential effects of certain activities or projects on the natural and human environment. There are several phases and tasks involved in completing an EA as outlined in the graphic below.



The City is finalizing Phase 2 of the EA Process and is currently preparing the EA submission. **We are interested in obtaining your input related to the current activities.**

BACKGROUND

Phase 1 of the EA process included public consultation and culminated with the Ministry of Environment and Climate Change's (MOECC) approval of the project Terms of Reference (ToR) in 2005. The ToR provides a framework or roadmap for completing the EA and summarizes the tasks and activities to be undertaken by the proponent.

Workshops and an Open House were held in the late spring of 2007 to present the waste management alternatives being considered. The input received was incorporated into the evaluation and **the preferred waste management alternative was identified as increased waste diversion through reduction, reuse and recycling (i.e. 3Rs) and landfilling of the residual waste.** The preferred alternative was presented at an Open House in June, 2010.

The study noted that landfills can be designed and operated to comply with regulations and policies, landfill gas can be collected and flared or recovered to generate electricity, landfills can manage the residual waste stream, landfills are flexible to changes in waste quality and quantities and landfilling is cost effective.

The City remains committed to investigating, implementing and supporting programs to increase waste diversion through 3Rs initiatives. Since the implementation of 3Rs initiatives does not require EA Act approval, the EA study turned its focus to alternative methods of landfilling residual waste. The key objective of this phase of the study is to find an environmentally suitable location for the development of additional landfill capacity.

The first step in this phase consisted of completing a non-site specific evaluation of developing a new landfill versus expanding an existing landfill. To identify a preferred approach to landfilling waste, the alternatives were compared using the following seven criteria groups:

- | | |
|--------------------------------|--|
| 1. Natural environment | 5. Capability of managing waste quality and quantity |
| 2. Social-cultural environment | 6. Proven technical capacity |
| 3. Economic environment | 7. Cost |
| 4. Flexibility of the system | |

A Public Input Session was held in April, 2011 to present the landfill alternatives being considered. **The evaluation and response from consultation concluded that an expansion of an existing landfill is generally preferred over construction of a new site.**

The study noted that an expansion requires less land, displaces fewer people and/or social/natural features, disrupts fewer people (i.e., one site versus two sites creating nuisance impacts), costs less, typically encounters fewer challenges in gaining technical approvals, and reduces the number of facilities the City must manage.

The second step in the Alternative Methods task focused on the best approach to expand the City's existing landfill site at 402 Fifth Line East by identifying and comparatively evaluating site expansion alternatives. Options considered included horizontal expansion (expand the extent of the disposal footprint), vertical expansion (increase the height of the disposal footprint), landfill mining (excavate previously disposed waste and cover material, recover earthen material or "fines" and return the waste to the disposal footprint) or a combination of these methodologies. A Public Input Session was held March, 2012 to obtain feedback on the evaluation criteria and the preliminary findings.

The evaluation and response from consultation concluded the preferred site expansion alternative consists of a modest increase in the height of the waste, an expansion of the disposal footprint to the west and north and mining a portion of the existing waste to enhance groundwater quality. All mined and expansion areas will include the



THE CITY OF SAULT STE. MARIE

JANUARY, 2016 NEWSLETTER

SOLID WASTE MANAGEMENT ENVIRONMENTAL ASSESSMENT

construction of a liner beneath the waste to collect leachate (precipitation contaminated as it filters through waste) and ultimately direct it to the City's sewage treatment plant for treatment.

Current Activities

The last part of Phase 2 involves assessing the potential impacts of the conceptual design and planned operation of the preferred site expansion alternative and identification of suitable mitigating measures. Multiple disciplines were involved to assess the various potential impacts of the expansion on site, off site, in the vicinity and along the access route. The access route was considered to be along Fifth Line from Highway 17 to the site (which is the same route used today). Measures to reduce or eliminate potential effects on the environment were recommended.

The disciplines that were involved include:

Natural Environment

- Biology
- Geology / hydrogeology
- Surface water

Socio-Cultural Environment

- Cultural (archaeology and heritage)
- Social
- Planned land use
- Visual
- Atmospheric (dust, noise, air quality)

Economic

- Businesses
- Transportation

HOW CAN I PROVIDE INPUT?

We will be hosting a Public Open House where you will learn about the results of the impact assessment work and we will ask for your feedback. If you are interested in discussing the project, we encourage you to attend the upcoming public open house!

YOU'RE INVITED!

Date: Tuesday, February 9, 2016
Location: Civic Centre – 99 Foster Drive
Russ Ramsay Room
Time: 3:30 pm to 7:30 pm
Refreshments to be provided.

We will provide you with background information and discuss, with you, the preferred site expansion option and the results from the impact assessment work.

If you are unable to attend the Public Input Session there are other opportunities to provide input. Please visit the City's website at the address noted below to obtain further information, and / or access a comment sheet.

Project webpage address: saultstemarie.ca/SolidWasteEA

CONTACT US

You may also contact the Consultant Project Manager or the City's Land Development and Environmental Engineer by email, mail or telephone if you have questions or would like additional information.

Mr. Rick Talvitie, P.Eng.

Project Manager
AECOM
523 Wellington Street East,
Sault Ste. Marie, ON, P6A 2M4

Phone: 705-942-2612

Email: rick.talvitie@aecom.com

Ms. Catherine Taddo, P.Eng.

Land Development and Environmental Engineer
City of Sault Ste. Marie
P.O. Box 580, 99 Foster Drive,
Sault Ste. Marie, ON, P6A 5N1

Phone: (705) 759-5380

Email: c.taddo@cityssm.on.ca

Conceptual Layout of Proposed Landfill Expansion Area

