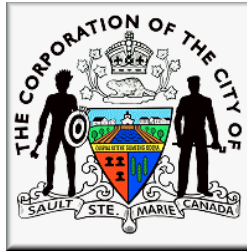
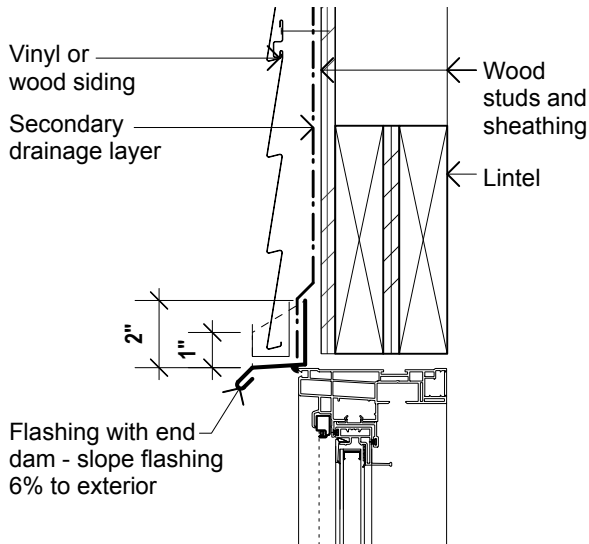


Jerry D. Dolcetti, RPP
Commissioner

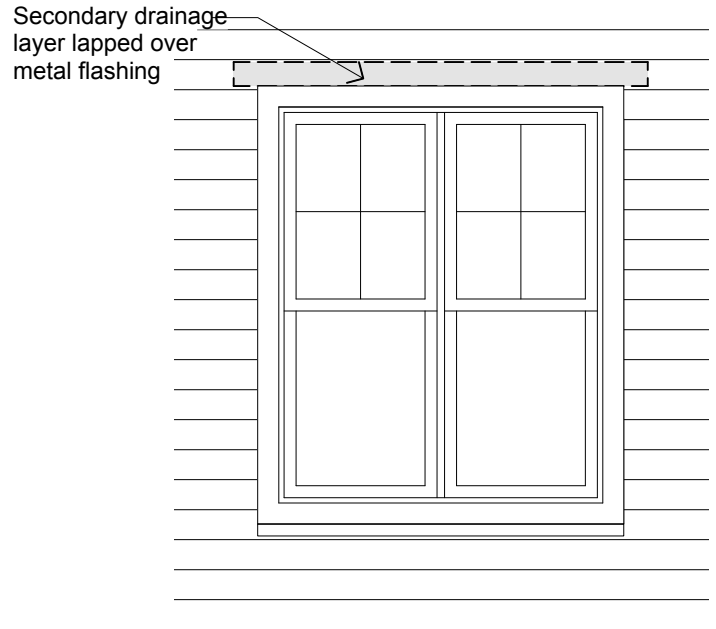
Don W. Maki, CBCO
Chief Building Official



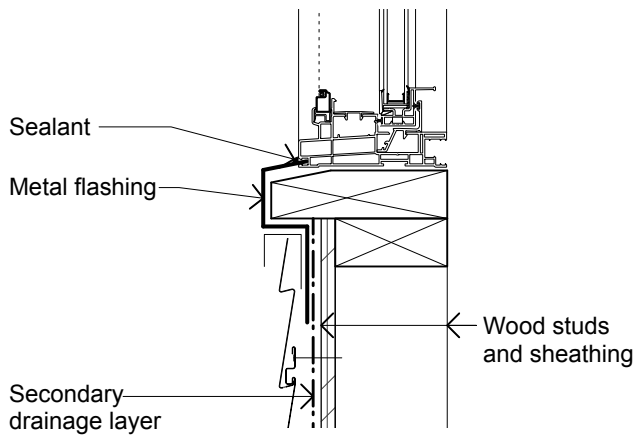
ENGINEERING & PLANNING DEPARTMENT
BUILDING DIVISION
(T) 705-759-5410
(F) 705-541-7165



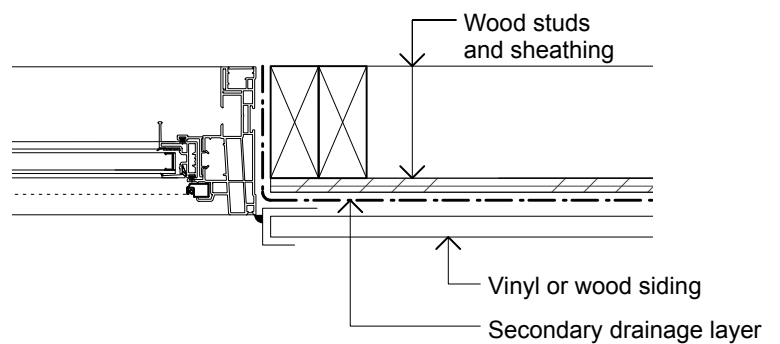
 **VINYL WINDOW HEAD**
NOT TO SCALE



 **WINDOW ELEVATION**
NOT TO SCALE



 **VINYL WINDOW SILL**
NOT TO SCALE



 **VINYL WINDOW JAMB**
NOT TO SCALE

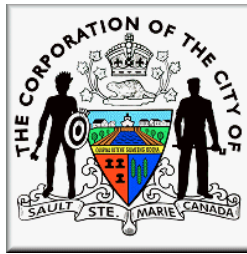
NOTES: Flashing installation per OBC 9.27.3.8.(4)

When a window without a nailing flange is used, drip edge flashing with end dams must be installed at window head. Self adhered membrane flashing may be used to seal the flashing to the secondary drainage layer.

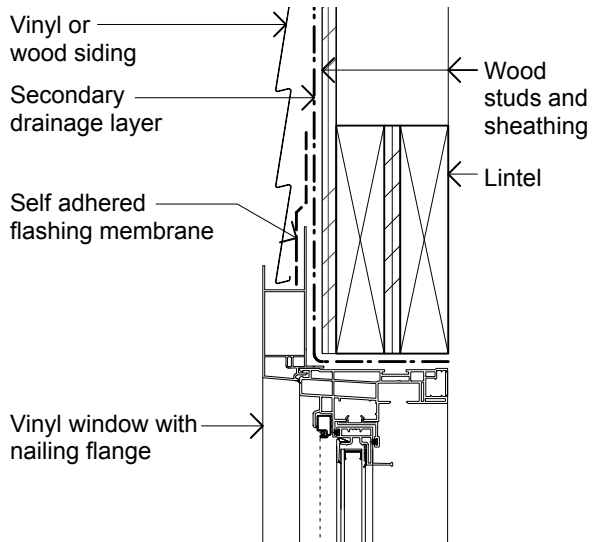
VINYL WINDOW WITHOUT INTEGRATED NAILING FLANGE

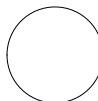
Jerry D. Dolcetti, RPP
Commissioner

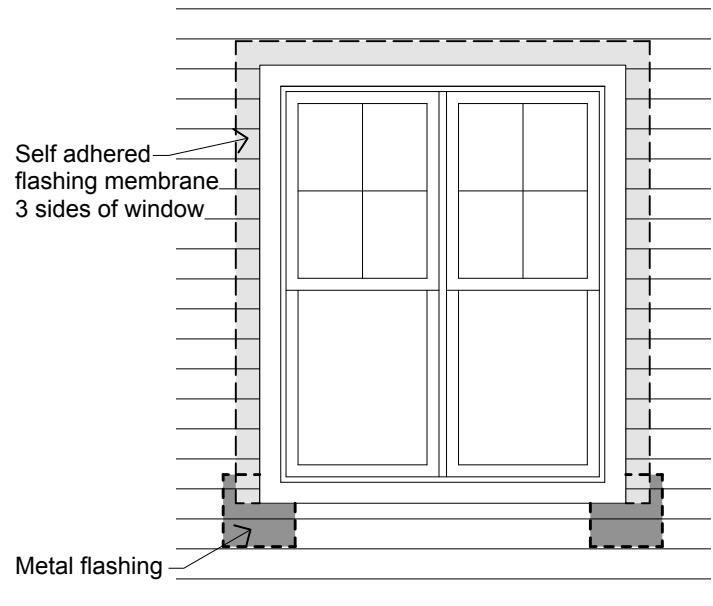
Don W. Maki, CBCO
Chief Building Official

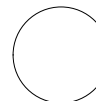


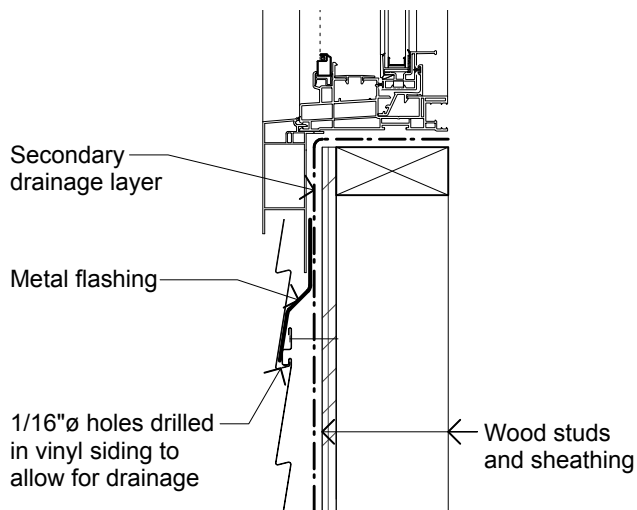
ENGINEERING & PLANNING DEPARTMENT
BUILDING DIVISION
(T) 705-759-5410
(F) 705-541-7165



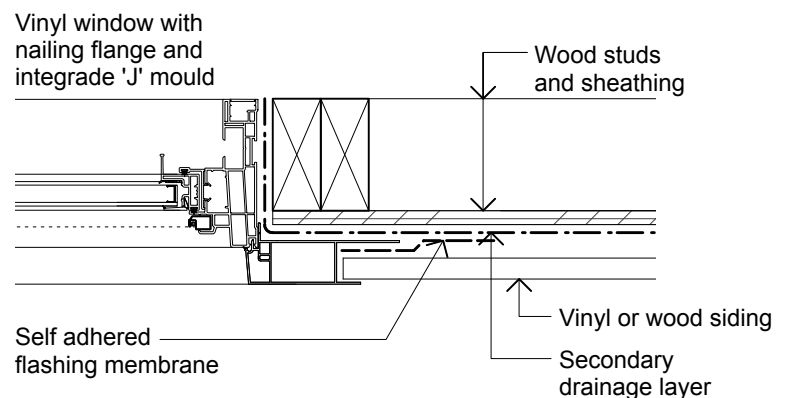
 **VINYL WINDOW HEAD**
NOT TO SCALE



 **WINDOW ELEVATION**
NOT TO SCALE



 **VINYL WINDOW SILL**
NOT TO SCALE



 **VINYL WINDOW JAMB**
NOT TO SCALE

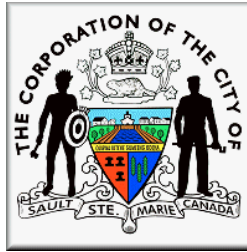
NOTES: Acceptable Alternative

When window with integrated 'J' mould and nailing flange is used, metal flashing shall be installed at both bottom corners as shown in elevation and window sill detail. Self adhered flashing membrane shall be installed on both jambs overlapping the metal at bottom corners, and across head.

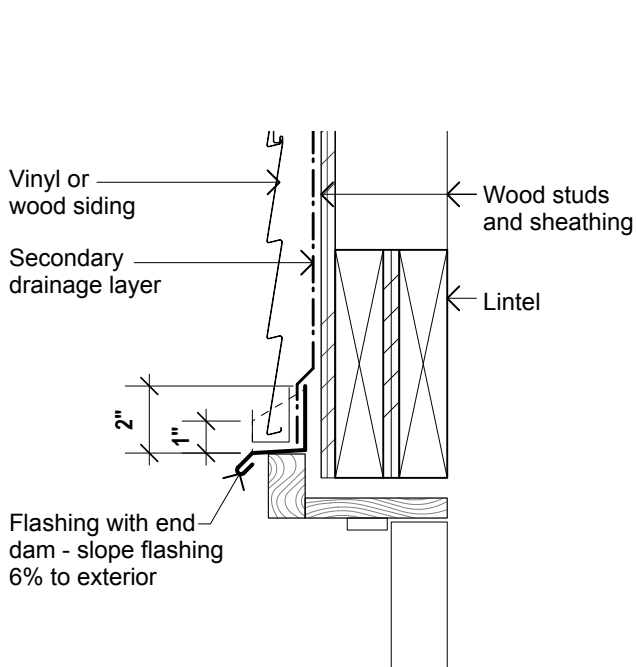
VINYL WINDOW WITH INTEGRATED NAILING FLANGE

Jerry D. Dolcetti, RPP
Commissioner

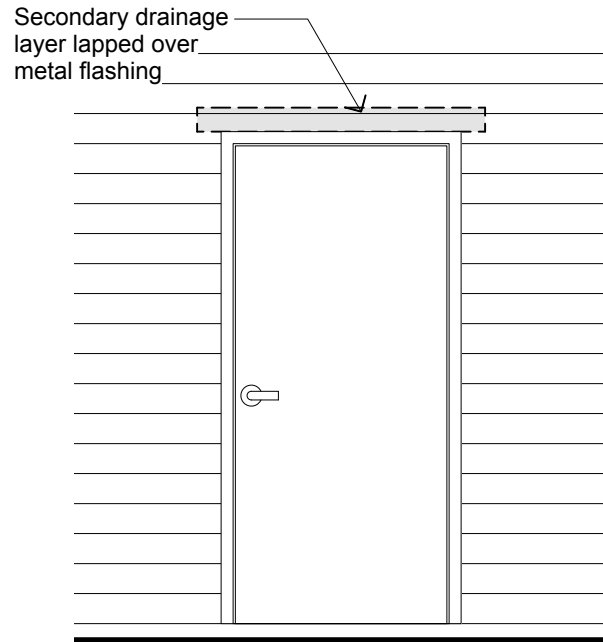
Don W. Maki, CBCO
Chief Building Official



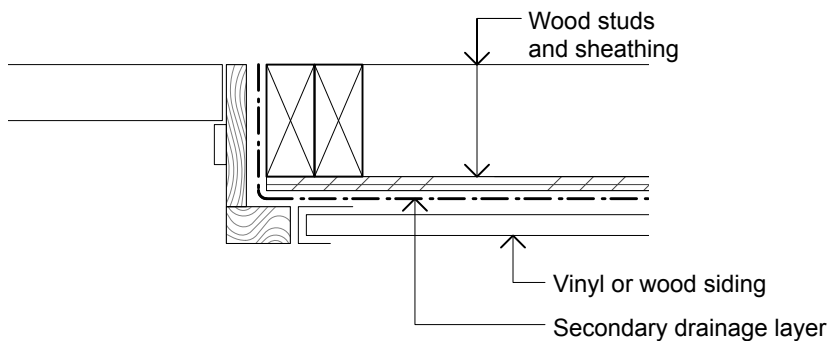
ENGINEERING & PLANNING DEPARTMENT
BUILDING DIVISION
(T) 705-759-5410
(F) 705-541-7165



DOOR HEAD DETAIL
NOT TO SCALE



DOOR ELEVATION
NOT TO SCALE



DOOR JAMB DETAIL
NOT TO SCALE

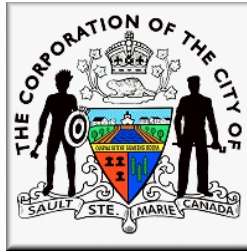
NOTES: Flashing installation per OBC 9.27.3.8.(4)

When no metal flashing is installed, drip edge flashing with end dams must be installed at door head. Self adhered membrane flashing may be used to seal the flashing to the secondary drainage layer. Door jambs must be painted or otherwise suitably finished.

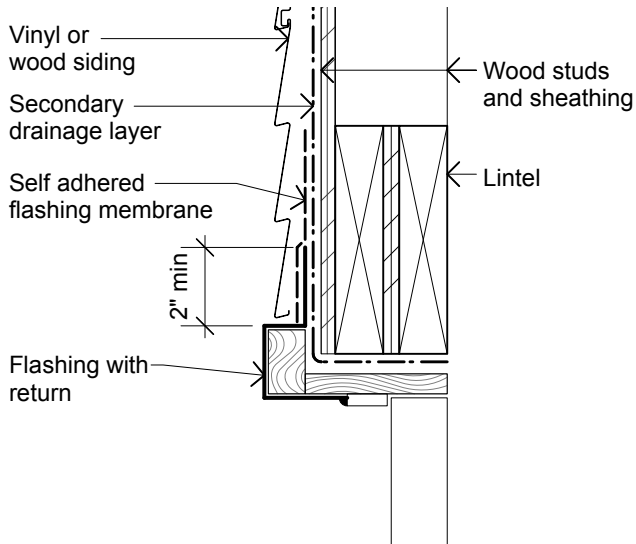
**DOOR WITHOUT METAL FLASHING (CAPPING)
(OVERHEAD DOOR SIMILAR)**

Jerry D. Dolcetti, RPP
Commissioner

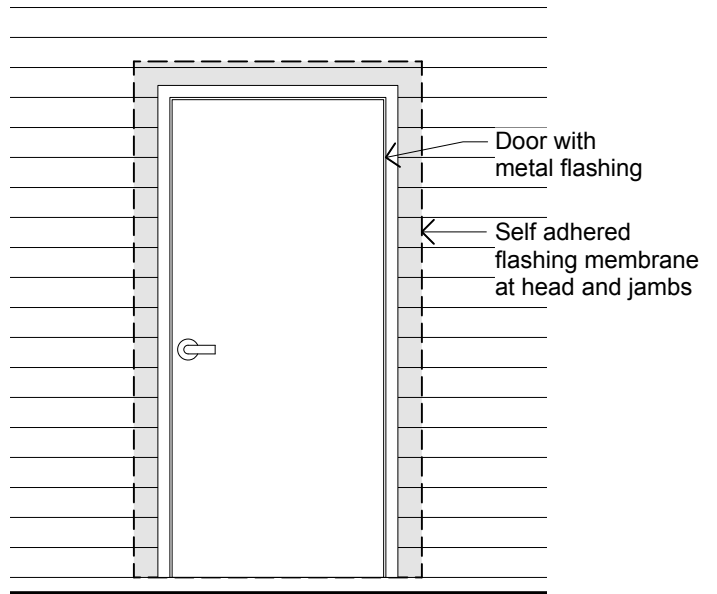
Don W. Maki, CBCO
Chief Building Official



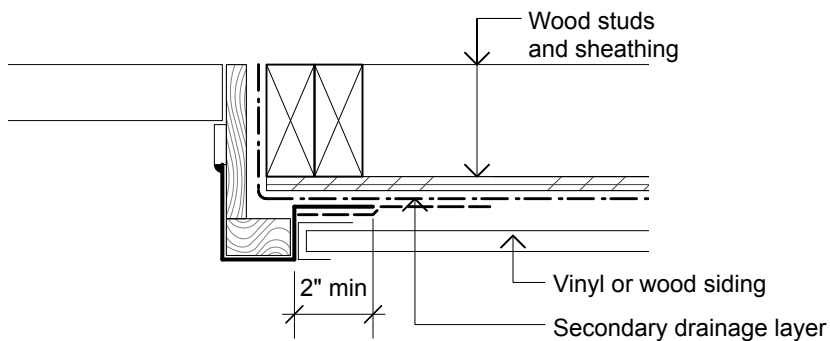
ENGINEERING & PLANNING DEPARTMENT
BUILDING DIVISION
(T) 705-759-5410
(F) 705-541-7165



DOOR HEAD DETAIL
NOT TO SCALE



DOOR ELEVATION
NOT TO SCALE



DOOR JAMB DETAIL
NOT TO SCALE

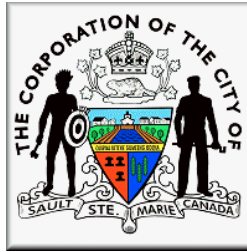
NOTES: Acceptable Alternative

When metal flashing is installed on doors (overhead or man doors) as shown in details, no drip edge flashing is required. A 2" wide return must be bent into flashing and sealed to secondary drainage layer with self adhered membrane flashing at door head and jacks.

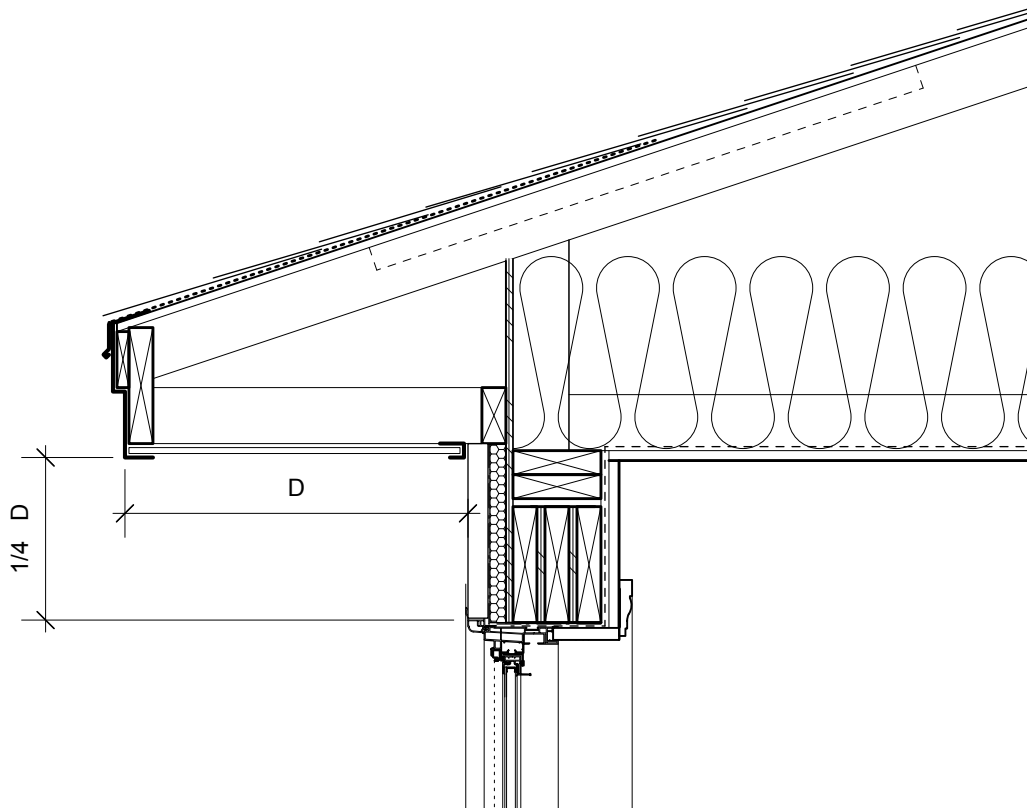
**DOOR WITH METAL FLASHING (CAPPING)
(OVERHEAD DOOR SIMILAR)**

Jerry D. Dolcetti, RPP
Commissioner

Don W. Maki, CBCO
Chief Building Official



ENGINEERING & PLANNING DEPARTMENT
BUILDING DIVISION
(T) 705-759-5410
(F) 705-541-7165



When the dimension between the window head and the overhang (soffit or floor above) is $\frac{1}{4}$ the dimension of the overhang, then no window head flashing is required.
9.27.3.8.(3) OBC.