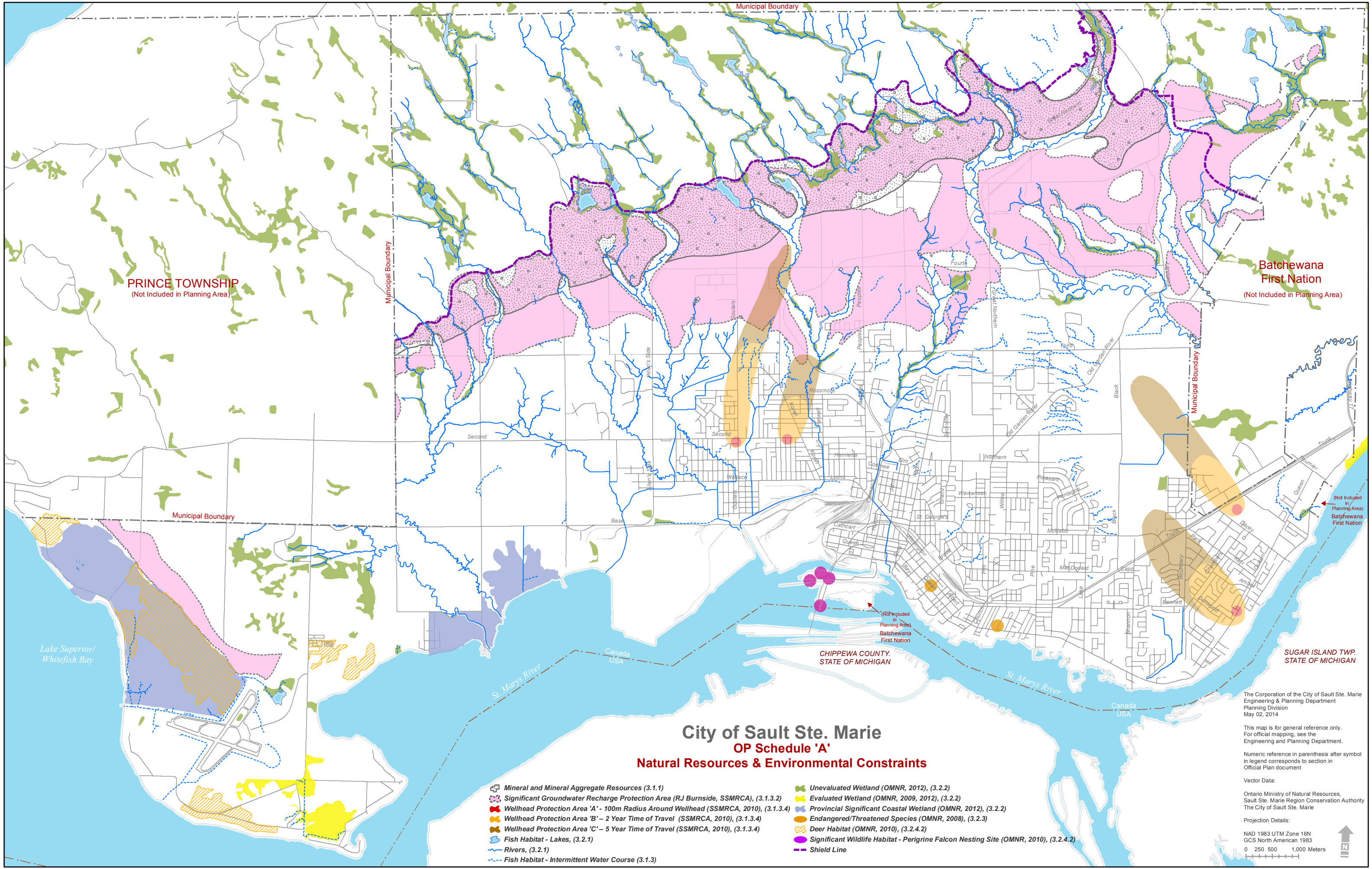


AECOM

Appendix B

Official Plan Schedules A, B, C, D



PRINCE TOWNSHIP
(Not Included in Planning Area)

Batchewana First Nation
(Not Included in Planning Area)

City of Sault Ste. Marie
OP Schedule 'A'
Natural Resources & Environmental Constraints

- Mineral and Mineral Aggregate Resources (3.1.1)
- Significant Groundwater Recharge Protection Area (RJ Burnside, SSMRCA), (3.1.3.2)
- Wellhead Protection Area 'A' - 100m Radius Around Wellhead (SSMRCA, 2010), (3.1.3.4)
- Wellhead Protection Area 'B' - 2 Year Time of Travel (SSMRCA, 2010), (3.1.3.4)
- Wellhead Protection Area 'C' - 5 Year Time of Travel (SSMRCA, 2010), (3.1.3.4)
- Fish Habitat - Lakes, (3.2.1)
- Rivers, (3.2.1)
- Fish Habitat - Intermittent Water Course (3.1.3)
- Unevaluated Wetland (OMNR, 2012), (3.2.2)
- Evaluated Wetland (OMNR, 2009, 2012), (3.2.2)
- Provincial Significant Coastal Wetland (OMNR, 2012), (3.2.2)
- Endangered/Threatened Species (OMNR, 2008), (3.2.3)
- Deer Habitat (OMNR, 2010), (3.2.4.2)
- Significant Wildlife Habitat - Perigrine Falcon Nesting Site (OMNR, 2010), (3.2.4.2)
- Shield Line

The Corporation of the City of Sault Ste. Marie
Engineering & Planning Department
Planning Division
May 02, 2014

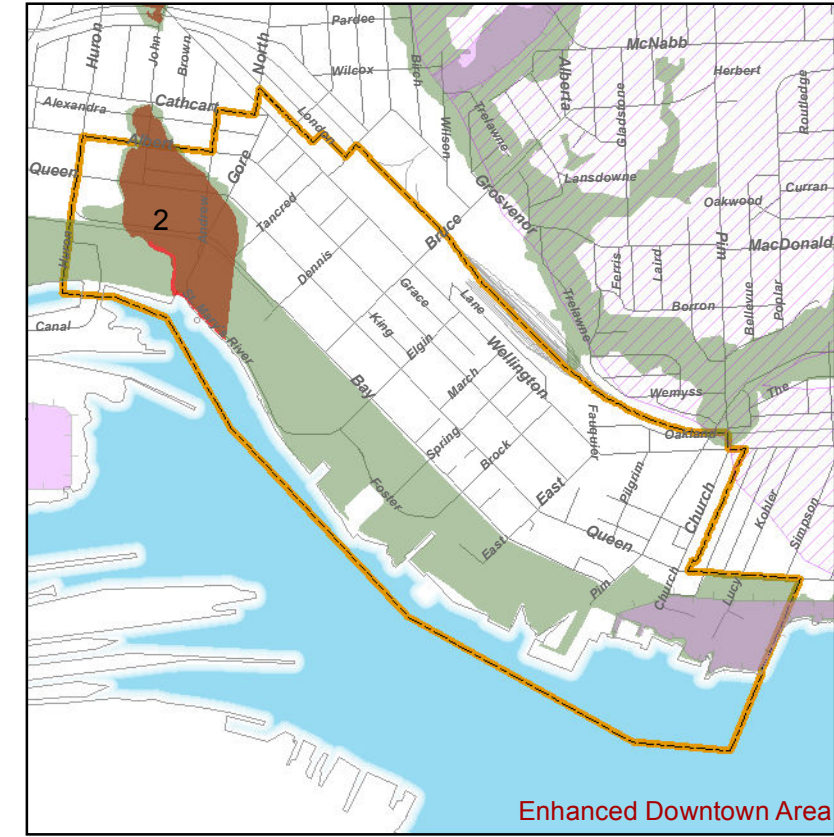
This map is for general reference only.
For official mapping, see the
Engineering and Planning Department.

Numeric reference in parenthesis after symbol
in legend corresponds to section in
Official Plan document

Vector Data:
Ontario Ministry of Natural Resources,
Sault Ste. Marie Region Conservation Authority
The City of Sault Ste. Marie

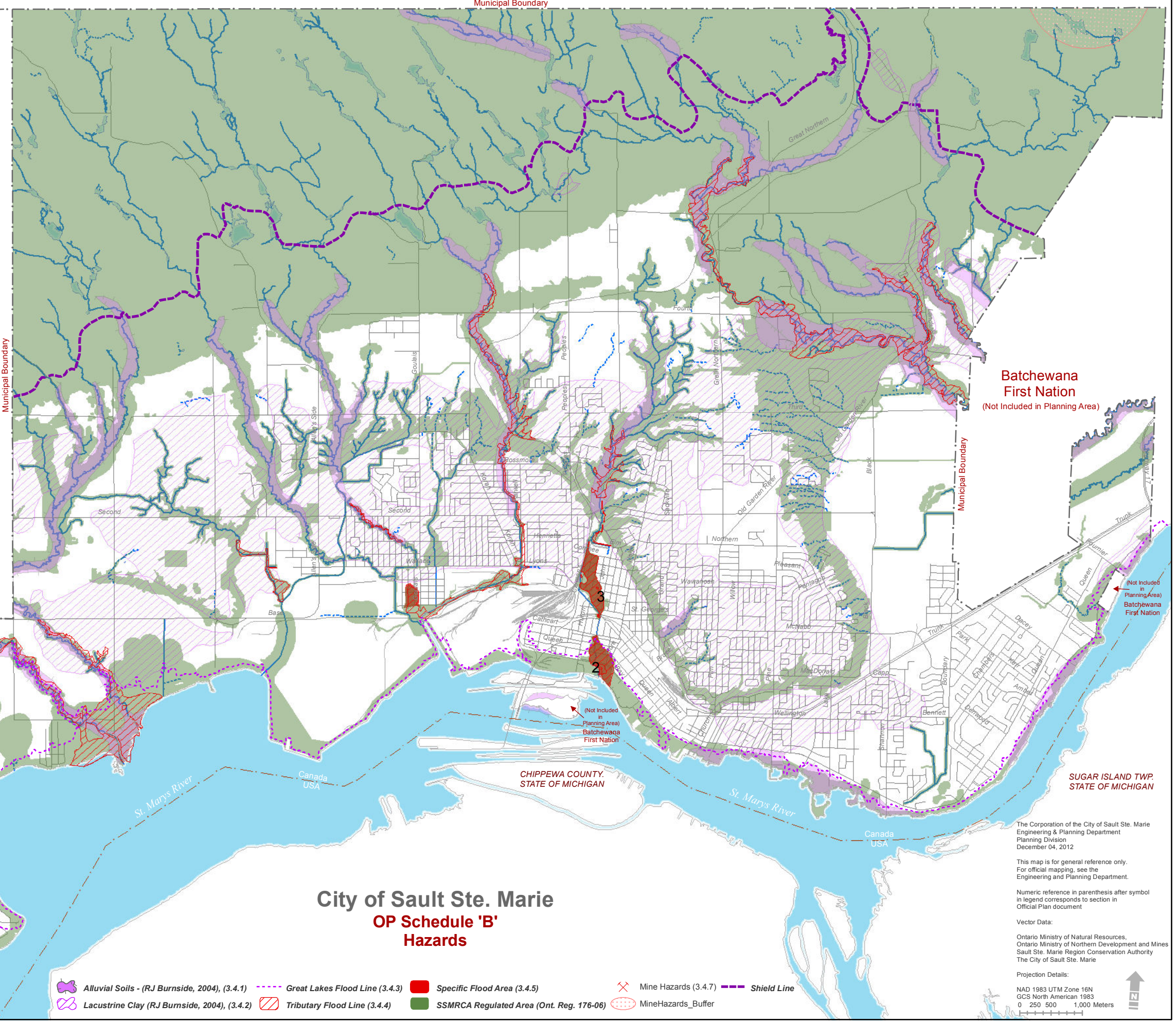
Projection Details:
NAD 1983 UTM Zone 16N
GCS North American 1983
0 250 500 1,000 Meters





PRINCE TOWNSHIP
(Not Included in Planning Area)

Municipal Boundary





Batchewana First Nation
(Not Included in Planning Area)

(Not Included in Planning Area)
Batchewana First Nation

SUGAR ISLAND TWP.
STATE OF MICHIGAN

City of Sault Ste. Marie
OP Schedule 'B'
Hazards

-  Alluvial Soils - (RJ Burnside, 2004), (3.4.1)
-  Great Lakes Flood Line (3.4.3)
-  Specific Flood Area (3.4.5)
-  Mine Hazards (3.4.7)
-  Shield Line
-  Lacustrine Clay (RJ Burnside, 2004), (3.4.2)
-  Tributary Flood Line (3.4.4)
-  SSMRCA Regulated Area (Ont. Reg. 176-06)
-  MineHazards_Buffer

The Corporation of the City of Sault Ste. Marie
Engineering & Planning Department
Planning Division
December 04, 2012

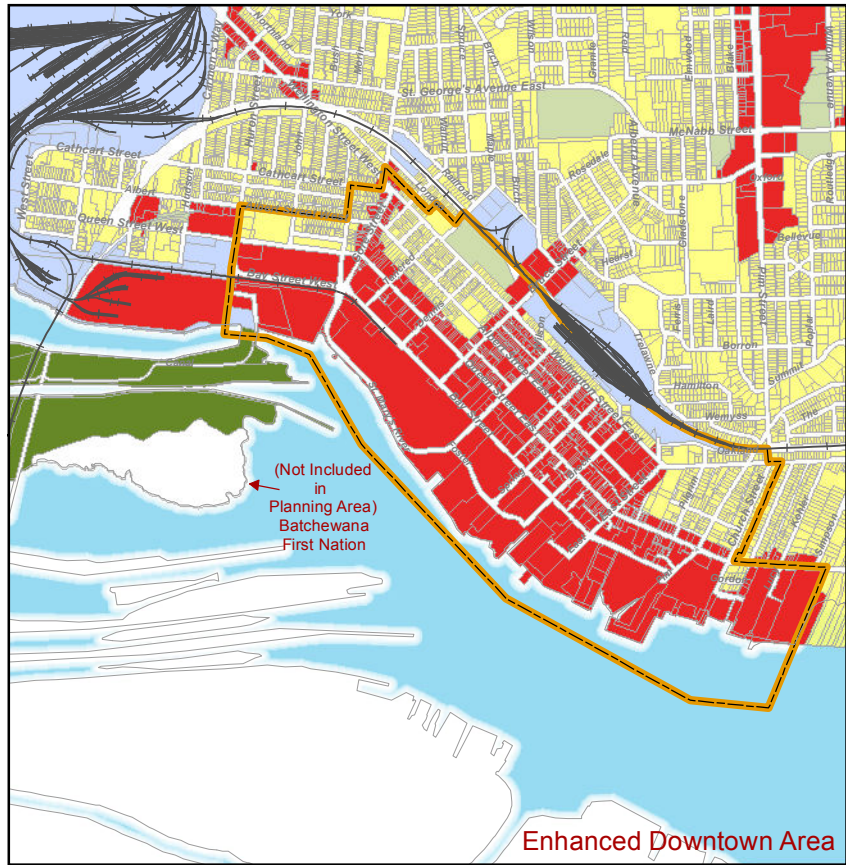
This map is for general reference only.
For official mapping, see the
Engineering and Planning Department.

Numeric reference in parenthesis after symbol
in legend corresponds to section in
Official Plan document

Vector Data:
Ontario Ministry of Natural Resources,
Ontario Ministry of Northern Development and Mines
Sault Ste. Marie Region Conservation Authority
The City of Sault Ste. Marie

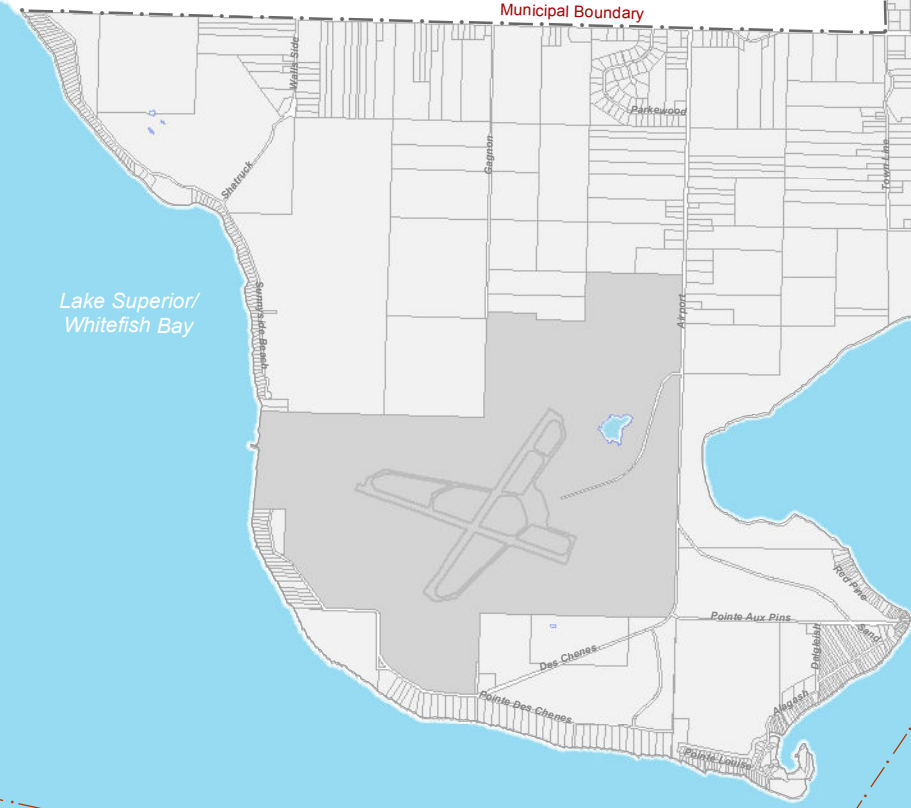
Projection Details:
NAD 1983 UTM Zone 16N
GCS North American 1983
0 250 500 1,000 Meters



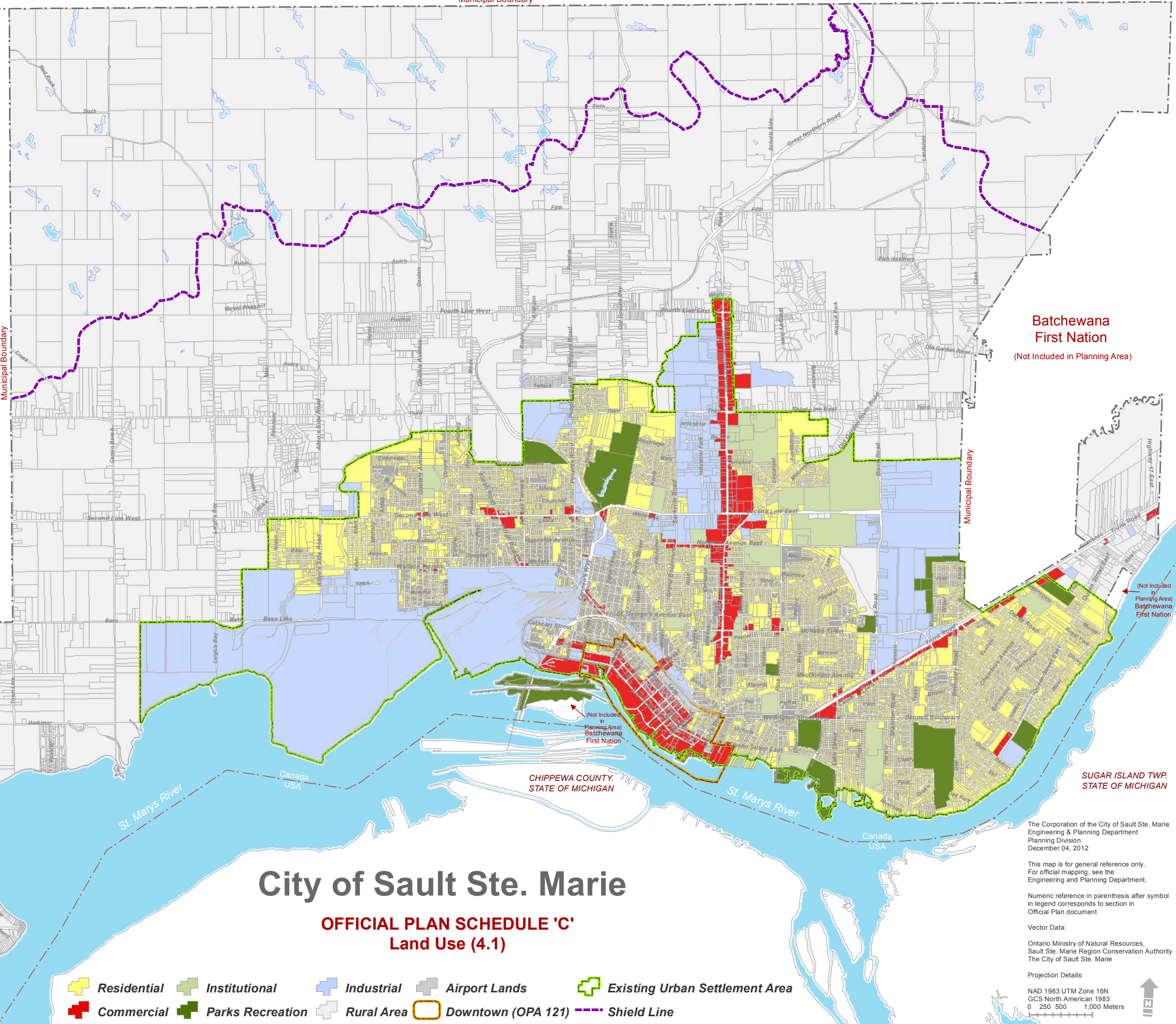


Enhanced Downtown Area

PRINCE TOWNSHIP
(Not Included in Planning Area)



Municipal Boundary



Batchewana First Nation
(Not Included in Planning Area)

(Not Included in Planning Area)
Batchewana First Nation

SUGAR ISLAND TWP.
STATE OF MICHIGAN

City of Sault Ste. Marie

OFFICIAL PLAN SCHEDULE 'C' Land Use (4.1)

- Residential
- Institutional
- Industrial
- Airport Lands
- Existing Urban Settlement Area
- Commercial
- Parks Recreation
- Rural Area
- Downtown (OPA 121)
- Shield Line

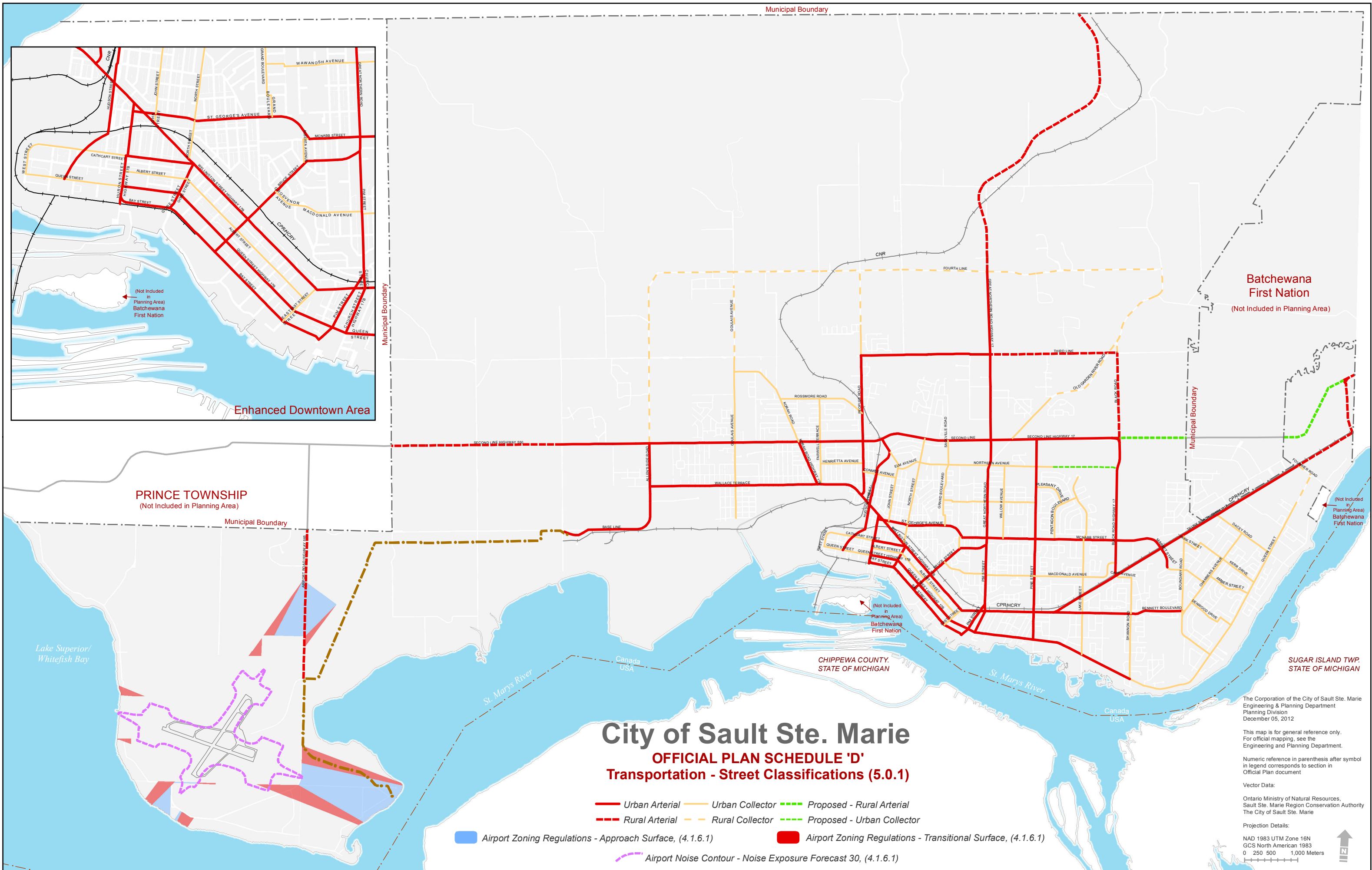
The Corporation of the City of Sault Ste. Marie
Engineering & Planning Department
Planning Division
December 04, 2012

This map is for general reference only.
For official mapping, see the
Engineering and Planning Department.

Numeric reference in parenthesis after symbol
in legend corresponds to section in
Official Plan document

Vector Data:
Ontario Ministry of Natural Resources,
Sault Ste. Marie Region Conservation Authority
The City of Sault Ste. Marie

Projection Details:
NAD 1983 UTM Zone 16N
GCS North American 1983
0 250 500 1,000 Meters



Municipal Boundary

PRINCE TOWNSHIP
(Not Included in Planning Area)

Batchewana
First Nation
(Not Included in Planning Area)

Municipal Boundary

Municipal Boundary

(Not Included in Planning Area)
Batchewana First Nation

Lake Superior/
Whitefish Bay

St. Marys River

Canada
USA

CHIPPEWA COUNTY.
STATE OF MICHIGAN

St. Marys River

Canada
USA

SUGAR ISLAND TWP.
STATE OF MICHIGAN

City of Sault Ste. Marie

OFFICIAL PLAN SCHEDULE 'D'

Transportation - Street Classifications (5.0.1)

- Urban Arterial
- Urban Collector
- - - Proposed - Rural Arterial
- - - Rural Arterial
- - - Rural Collector
- - - Proposed - Urban Collector
- Airport Zoning Regulations - Approach Surface, (4.1.6.1)
- Airport Zoning Regulations - Transitional Surface, (4.1.6.1)
- - - Airport Noise Contour - Noise Exposure Forecast 30, (4.1.6.1)

The Corporation of the City of Sault Ste. Marie
Engineering & Planning Department
Planning Division
December 05, 2012

This map is for general reference only.
For official mapping, see the
Engineering and Planning Department.

Numeric reference in parenthesis after symbol
in legend corresponds to section in
Official Plan document

Vector Data:
Ontario Ministry of Natural Resources,
Sault Ste. Marie Region Conservation Authority
The City of Sault Ste. Marie

Projection Details:
NAD 1983 UTM Zone 16N
GCS North American 1983
0 250 500 1,000 Meters

